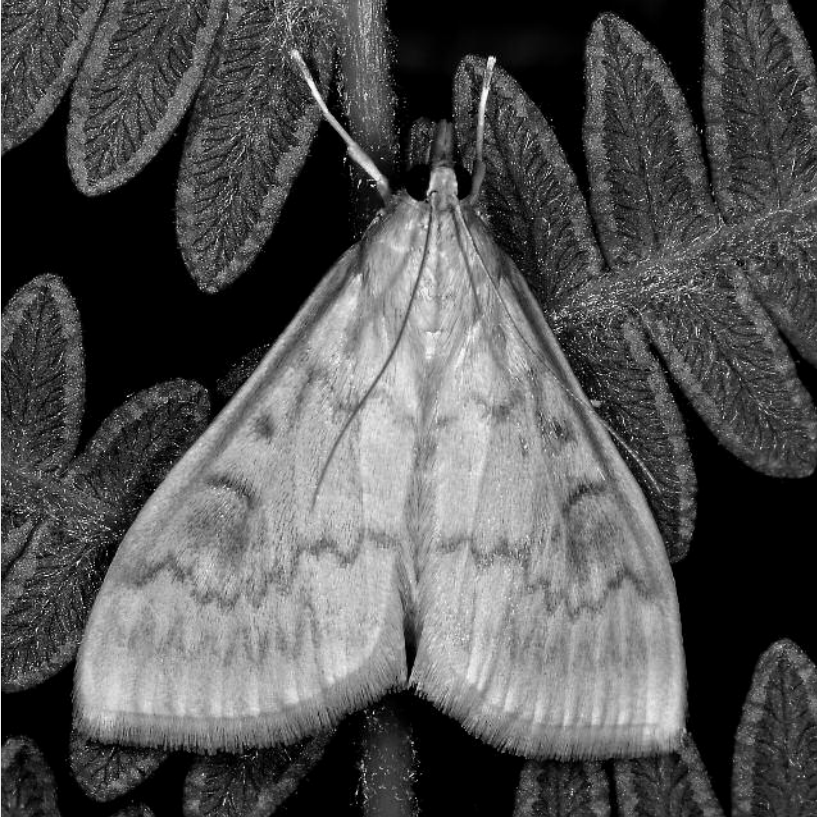


THE  
**ENTOMOLOGIST'S RECORD**  
AND JOURNAL OF VARIATION

*A publication of The Amateur Entomologists' Society*



**Contents and Special Index      Volume 133 (2021)**

Edited by C. W. Plant

ISSN 0013-8916

# THE ENTOMOLOGIST'S RECORD

## AND JOURNAL OF VARIATION

World List abbreviation: *Entomologist's Rec. J. Var.*

<http://www.entrecord.com>

Published by the Amateur Entomologists' Society  
UK Registered Charity number 267430

Annual subscription for individual subscribers for 2021 is £30.  
For institutional and overseas rates please visit the website at [www.entrecord.com](http://www.entrecord.com)

### Editor

C.W. PLANT, B.Sc., F.R.E.S., F.B.N.A.  
14 West Road, Bishops Stortford, Hertfordshire CM23 3QP.  
Telephone: 01279 507697 E-mail: [colinwplant@gmail.com](mailto:colinwplant@gmail.com)

**Webmaster:** Rob Edmunds B.Sc., M.A., F.R.E.S.

**Proof Reader:** Graham Wenman

**Indexer:** Barry Goater

### Who to contact

Material for publication, books for review, obituaries, advertisements – the Editor  
ALL OTHER MATTERS (subscriptions, change of address, late or non-arrivals, back issues –  
e-mail [registrar@amentsoc.org](mailto:registrar@amentsoc.org) or write to PO Box 8774, London SW7 5ZG

### Back Issues

Volumes more than ten years old may be read at [www.biodiversitylibrary.org/bibliography/8408](http://www.biodiversitylibrary.org/bibliography/8408)

**Readers are respectfully advised that the publication of material in this journal does not imply that the views and opinions expressed therein are shared by the Editor or by the Amateur Entomologists' Society or by any party other than the named author or authors.**

### Guidelines for Contributors

The Editor welcomes contributions on British Isles Lepidoptera, on non-British Lepidoptera where likely to be of interest to British researchers and on other groups of British Insects for which specialist English language journals do not currently exist. We accept descriptions of new species. Other subject matter may be accepted entirely at the discretion of the Editor, whose decision is final.

Please follow the format in this issue; if in doubt, ask the Editor. We positively encourage the use of colour photographs of insects and their habitats but their inclusion must enhance the text or serve some other useful purpose. We encourage the use of colour in the interpretation of graphs, charts etc. All images must be sent as individual separate files; please send high resolution files – do not reduce file size for ease of e-mailing. Images embedded (pasted into) word processor files cannot be used.

All papers are subject to peer-review and may be returned for changes prior to acceptance. Shorter communications and Notes are normally reviewed by the Editor but may also be sent for external review before acceptance; to reduce both cost and delay required changes to these are usually made by the Editor.

We now issue pdf files in place of paper reprints. These are sent automatically to the first named author of Papers and Notes. Abstracts of Papers are published on our website.

Books for review must be sent to the Editor in the first instance. We do not normally accept unsolicited reviews by third parties.

### The General Data Protection Regulation (GDPR)

It is the policy of this journal to include the name(s) and contact details of authors, as supplied to the Editor, as a part of their published contributions. Where the publication of an address is considered unacceptable, a "care of" address may be substituted by the author(s). Advertisements and other non scientific material submitted for publications are also subject to the GDPR and must adhere to the published AES policy.

Front cover image: European Corn-borer *Ostrinia nubilalis* (Hb.), Ladycross, New Forest, Hampshire, 30.vi.2015.

Photograph copyright © Paul Brock

---

# CONTENTS

Compiled by Colin W. Plant & Andrew Smith

## 1: PEER-REVIEWED PAPERS

### C

- (A) contribution to the knowledge of the Macro-moths of Cothill Fen, Oxfordshire. *Paul Waring*, 242-249  
*Caloptilia fidella* (Reutti, 1853) (Lep.: Gracillariidae) new to the British fauna resident in East Suffolk.  
*Raymond A. Watson, Allan C. Eaton & Helen E. McClennon-Warnock*, 217-224  
*Calybites phasianipennella* (Hübner, [1813]) (Lep.: Gracillariidae): a note on both larval forms and the pupa. *R. J. Heckford*, 212-214  
Changes in Surrey's butterfly fauna. *Harry E. Clarke*, 86-100

### E

- Euzopherodes vapidella* (Mann, 1857) (Lep.: Pyralidae) new to Britain. *Ben Sale & Graeme J. Smith*, 257-259

### F

- Fourth update to *A Checklist of the Lepidoptera of the British Isles*, 2013. *David J. L. Agassiz, S. D. Beavan & R. J. Heckford*, 1-8

### H

- Hydraecia osseola* (Staudinger, 1882) (Noctuidae) and *Araeopteron ecpheaea* Hampson, 1940 (Erebidae) new for the fauna of Croatia. *Toni Koren*, 12-16

### I

- (The) immigration of Lepidoptera to the British Isles in 2017. *Sean P. Clancy*, 165-209  
Impact of railway works on the Four-spotted Moth *Tyta luctuosa* (D. & S.) and other day-flying Lepidoptera at Werrington Brook Drain, Peterborough in 2020. *Paul Waring*, 225-234  
Invertebrates found trees and shrubs in some Shropshire garden centres, 2015-2019. *Ian S. Thompson & A. Godfrey Blunt*, 75-85

### J

- Jasione Pug *Eupithecia denotata* (Hübner, 1813) F. *Jasioneata* Crewe, 1881: its discovery in Somerset and some discussion of its ecology *Will Langdon*, 117-123

### L

- Limnephilus pati* O'Connor (Trich.: Limnephilidae), a caddisfly new to Scotland. *Robin D. Sutton, Ian D. Wallace & James P. O'Connor*, 49-52

### M

- (The) Macro-Lepidoptera of Sydlings Copse, Oxfordshire. *Paul Waring*, 101-116  
(The) macro-moths of Aston Rowant National Nature Reserve, Oxfordshire. *Paul Waring*, 31-48  
Microlepidoptera Review of 2020. *A.M. Davis & G.M. Tordoff*, 267-298  
Middle Eocene Bagworm Moth cases (Lep.: Psychidae) from Baltic amber, *Martin J. F. Fowler*, 153

### N

- Nemophora oxsenheimerella* (Hübner [1813]) (Lep.: Adelidae) new to the British Isles, *David W. Emley*, 264-266

### P

- Paracossulus thrips* (Hübner, 1818) (Lep.: Cossidae) re-discovered in Bulgaria with notes of some other surprising findings in the Dragoman Natura 2000 Protected Area. *Stoyan Beshkov & Ana Nahirnić-Beshkova*, 22-30

### R

- Recording the recent occurrence of *Lythria sanguinaria* (Duponchel, 1842) in Great Britain (Lep.: Geometridae), *Balázs Tóth, Gergely Katona & Tyrone Capel*, 210-211

## W

When should we run the moth trap in winter. *Chris Tyler-Smith & Yali Xue*, 124-132

## 2: NOTES

### A

*Acleris sparsana* ([Denis & Schiffermüller], 1775): Flight times and voltinism re-examined. *Derek Lee*, 142-145

Additions to the Lepidoptera recorded in Huntingdonshire, vice-county 31, along with notes on some of the other unusual species recorded during 2020. *Barry Dickerson*, 145-150

An August record of an adult *Orthosia gothica* (L.) (Noctuidae) – the Hebrew Character. *Colin W. Plant*, 237-238

### C

*Caloptilia honoratella* (Rebel, 1914) (Lep.: Gracillariidae) new to Norfolk on the basis of an atypical imago. *James I. McCulloch*, 10-11

(A) compact and economical method for eclosing large numbers of moths individually in captivity. *James C. Weir*, 238-239

*Conistra rubiginosa* (Scopoli, 1763) Black-spotted Chestnut (Lep.: Noctuidae). Increasing numbers in England. *Robin Knill-Jones*, 65-68

*Cydia interscindana* (Möschler, 1866) (Lep.: Tortricidae): 14th UK record and other noteworthy Lepidoptera records from Reading, Berkshire. *Finley N. Hutchinson*, 19-20

### D

Dewick's Plusia *Macdunnoughia confusa* (Steph.) and Kent Black Arches *Meganola albula* (D. & S.) (Noctuidae) resident and breeding in the London area (Middlesex). *Colin W. Plant*, 240

### E

*Eana penziana* (Thunberg & Becklin, 1791) f. *bellana* Curtis, 1826 (Lep.: Tortricidae) still extant in Scotland. *Mark Cubitt & Tom Prescott*, 73

*Elachista orstadii* Palm (Lep.: Elachistidae) in Wiltshire. *George Tordoff*, 9

(An) example of *Aglais urticae* (L.) ab. *conjuncta* Neuberger, 1905 (Lep.: Nymphalidae) in Scotland. *Craig Austick*, 241

### F

(The) finding of leafmines of *Bucculatrix ulmifoliae* Hering, 1931 (Lep.: Nepticulidae) in Bedfordshire and its current status in the UK. *Andy Banthorpe*, 17-19

Further notes and observations of *Papilio machaon* L. (Lep.: Papilionidae) utilizing Hemlock *Conium maculatum* L. as host-plant. *Kevin Radley & Hannah Breach*, 215-216

### H

*Haplotinea insectella* (Fabr.) (Lep.: Tineidae) confirmed as a Middlesex moth. *Simon Buckingham*, 307-308

*Homoeosoma nimbella* (Duponchel, 1836) (Lep.: Pyralidae) new to Ireland. *Tony Bryant & K. G. M. Bond*, 160-161

Hummingbird Hawk-moth *Macroglossum stellatarum* (L.) (Lep.: Sphingidae) active at night. *Roy Leverton*, 54-55

### I

Inter-family pairing between male *Chrysoteuchia culmella* (L.) (Lep.: Crambidae) and female Barred Hook-tip *Watsonalla cultraria* (Fab.) (Lep.: Drepanidae). *Guy H. J. Meredith*, 299

### K

(A) key characteristic present on the hind-wings of male specimens of *Pammene albuginana* (Guenée, 1845) (Lep.: Tortricidae). *Peter Hall, Nigel Voaden & Mark Young*, 260-262

### L

Lychnis *Hadena bicruris* (Hufnagel, 1766) (Lep.: Noctuidae) oviposition. *Roy Leverton*, 301-303

## M

- Monitoring the endangered Marsh Moth *Athetis pallustris* (Hbn.) (Lep.: Noctuidae) at Saltfleetby in 2018. *Paul Waring*, 58-59
- My annus mirabilis*: Monks Wood, 1971-1972. *Robert Michael Pyle*, 135-141

## N

- Northern UK immigration event at the end of July 2019. *Mark Cubitt*, 69-72
- (A) note on ichneumonid parasitoids of the Swallowtail Butterfly *Papilio machaon* L. (Lep.: Papilionidae). *Kevin Radley & Hannah Breach*, 299-301

## O

- Observations of crumpled wings in stoneflies (Plecoptera). *Hugh B. Feeley, Craig R. MacAdam*, 55-58
- Observations of moths on daffodils *Narcissus* spp. *Gordon Hunter*, 150-152
- (The) occurrence of *Triaxomasia caprimulgella* (Stainton, 1851) (Lep.: Tineidae) to the LUN Pheromone Lure. *Finley N. Hutchinson*, 250-253
- Trachypepla contritella* (Walker, 1864) (Lep.: Oecophoridae) discovered in Cornwall plus further updates from Bedfordshire and Huntingdonshire. *Barry Dickerson*, 60-61

## P

- Painted Lady *Vanessa cardui* (L., 1758) (Lep.: Nymphalidae) spring primary immigrants differing in forewing shape and hindwing markings from the autumn progeny. *Roy Leverton*, 303-307
- Phyllonorycter blancardella* (Fabricius 1791) (Lep.: Gracillariidae) bred from mines on *Amelanchier lamarckii*. *Charles H. Fletcher & Alastair H. Fitter*, 141-142
- Phyllonorycter sorbi* (Frey) (Lep.: Gracillariidae): Larval mines on Wild Service tree *Sorbus torminalis* in Devon – a new foodplant for Britain. *Phil Barden*, 61-62
- Provisional data suggests the presence of *Udea simplicella* (La Harpe, 1861) (Crambidae: Spilomelinae) in Murcia, south-east Spain. *J. Girdley, M. Garre, J. J. Guerrero, R. M. Rubio & A. S. Ortiz*, 53-54

## R

- Red Carpet *Xanthorhoe decoloraria* (Esper, [1806]) (Lep.: Geometridae) distribution in Scotland and the north of England. *Mark Cubitt*, 132-135

## S

- Scarce Burnished Brass *Diachrysis chryson* (Esper, 1798) (Noctuidae) and parasitoid *Campoletis* spp. (Ichneumonidae: Campopleginae) at Cothill Fen, Oxfordshire. *Paul Waring*, 262-263
- Six-spot Burnet *Zygaena filipendulae* (L., 1758) (Lep.: Zygaenidae) in September. *Martin Corley*, 260

## U

- Unusual form of Lesser Common Rustic *Mesapamea didyma* (Esper, 1788) (Lep.: Noctuidae). *Nigel G. J. Richards & Roy Leverton*, 235-237

## V

- Ventocoris falcatus* (Cyrillus) (Het.: Pentatomidae). An unexpected shield-bug record for Buckinghamshire. *Dave Wilton*, 21

## 3: BOOK REVIEWS

- A natural history of insects in 100 limericks* by Richard Jones & Calvin Ure-Jones, 163
- Blow flies* (Diptera: Calliphoridae, Polleniidae, Rhiniidae) by Olga Sivell, 164
- Britain's Insects: A field guide to the insects of Great Britain and Ireland* by Paul D. Brock, 255-256
- British Moths. A Gateway Guide. A field guide to the common moths of Britain and Ireland* by James Lowen, 254-255
- Magyarország Eupitheciini faunája – The Eupitheciini of Hungary* by Imre Fazekas, 63-64
- The Disappearance of Butterflies* by J. H. Reichholf, 63

## 4. ANNOUNCEMENTS

Appeal for Sawfly data, *Andy Musgrove*, 308  
Identifier needed for Balkan Gelechiidae, *Colin W. Plant*, 116  
Moth Voucher Photo Archive, *Mark Cubitt*, 161-162  
Relaunch of Lacewing Recording Scheme, *Colin W. Plant*, 253

## 6: CONTRIBUTORS

Page number entries **in bold** refer to peer-reviewed papers; entries in ordinary type refer to Notes and other communications that have been refereed internally by the Editor and his colleagues. Where an author is not the first named of multiple authors, page number entry is printed in *italic type*.

|                            |                         |  |                           |
|----------------------------|-------------------------|--|---------------------------|
| Agassiz, David J. L. ....  | <b>1-8</b>              | Koren, Toni .....  | <b>12-16</b>              |
| Austick, Craig .....       | 241                     | Langdon, Will .....  | <b>117-123</b>            |
| Banthorpe, Andy .....      | 17-19                   | Lee, Derek .....   | 142-145                   |
| Barden, Phil .....         | 61-62                   | Leverton Roy 54-55, 235-237, 301-303, 303-307                        |                           |
| Beavan, S. D. ....         | <b>1-8</b>              | MacAdam, Craig R. ....   | 55-58                     |
| Beshkov, Stoyan .....      | <b>22-30</b>            | McClennon-Warnock, Helen E. ....                                     | <b>217-224</b>            |
| Blunt, Godfrey.....        | <b>75-85</b>            | McCulloch, James I. ....   | 10-11                     |
| Bond, K. G. M. ....        | <i>160-161</i>          | Meredith, Guy H. J. ....   | 299                       |
| Breach, Hannah .....       | <i>215-216, 299-301</i> | Nahirnić-Beshkova, Ana .....   | <b>22-30</b>              |
| Bryant, Tony .....         | 160-161                 | O'Connor, James P. ....  | <b>49-52</b>              |
| Buckingham, Simon, .....   | 307-308                 | Ortiz, A. S. ....  | 53-54                     |
| Capel, Tyrone.....         | <b>210-211</b>          | Plant, Colin W. ....   | 237-238, 240              |
| Clancy, Sean P. ....       | <b>165-209</b>          | Prescott, Tom .....  | 73                        |
| Clarke, Harry E. ....      | <b>86-100</b>           | Pyle, Robert Michael .....   | 135-141                   |
| Corley, Martin .....       | 260                     | Radley, Kevin .....  | 215-216, 299-301, 299-301 |
| Cubitt, Mark .....         | 69-72, 73, 132-135      | Richards, Nigel G. J. ....   | 235-237                   |
| Davis, M. ....             | <b>267-298</b>          | Rubio, R. M. ....  | 53-54                     |
| Dickerson, Barry .....     | 60-61, 145-150          | Sale, Ben .....  | <b>257-259</b>            |
| Eaton, Allan C. ....       | <b>217-224</b>          | Smith, Graeme J. ....  | <b>257-259</b>            |
| Emley, David W. ....       | <b>264-266</b>          | Sutton, Robin D. ....  | <b>49-52</b>              |
| Feeley, Hugh B. ....       | 55-58                   | Thompson, Ian. S. ....   | <b>75-85</b>              |
| Fitter, Alastair H. ....   | <i>141-142</i>          | Tordoff, G. M. ....  | 9, <b>267-298</b>         |
| Fletcher, Charles H. ....  | 141-142                 | Tóth, Balázs .....   | <b>210-211</b>            |
| Fowler, Martin J. F. ....  | <b>153</b>              | Tyler-Smith, Chris .....   | <b>124-132</b>            |
| Garre, M. ....             | 53-54                   | Voaden, Nigel .....  | 260-262                   |
| Girdley, J. ....           | 53-54                   | Wallace, Ian D. ....   | <b>49-52</b>              |
| Guerrero, J. J. ....       | 53-54                   | Waring, Paul 58-59, <b>31-48, 101-116, 225-234, 242-249, 262-263</b> |                           |
| Hall, Peter, .....         | 260-262                 | Watson, Raymond A. ....  | <b>217-224</b>            |
| Heckford, R. J. ....       | <b>1-8, 212-214</b>     | Weir, James C. ....  | 238-239                   |
| Hunter, Gordon, .....      | 150-152                 | Wilton, Dave .....   | 21                        |
| Hutchinson, Finley N. .... | 19-20, 250-253          | Xue, Yali .....  | <b>124-132</b>            |
| Katona, Gergely.....       | <b>210-211</b>          | Young, Mark .....  | 260-262                   |
| Knill-Jones, Robin .....   | 65-68                   |  |                           |

# SPECIAL INDEX

Compiled by Barry Goater

Newly described taxa are indicated in **bold** type.

Taxa new to, or newly recognised in, the British Isles and mentioned first in this volume are indicated by an asterisk\*.

|   | Page                 |   | Page           |
|---|----------------------|---|----------------|
| <b>LEPIDOPTERA</b>  |                      |   |                |
| <i>abbreviata</i> Steph. <i>Eupithecia</i> .....                            | 47,104               | <i>alchemillata</i> (Linn.), <i>Perizoma</i> .....              | 47,110         |
| <i>abietana</i> (Hübner.), <i>Acleris</i> .....                             | 286,296              | <i>alcyonipennella</i> (Kollar), <i>Coleophora</i> .....        | 282            |
| <i>abietaria</i> (Goeze), <i>Eupithecia</i> .....                           | 179                  | <i>algae</i> (Fabr.), <i>Cryphia</i> .....                      | 69,147         |
| <i>abietella</i> ([D. & S.]), <i>Dioryctria</i> .....                       | 291,295              | <i>algira</i> (Linn.), <i>Dysgonia</i> .....                    | 166,167,184    |
| <i>abruptaria</i> (Thunb.), <i>Menophra</i> .....                           | 47,110               | <i>alimana</i> (Rag.), <i>Gynnidomorpha</i> .....               | 286            |
| <i>absinthiata</i> (Clerck), <i>Eupithecia</i> .....                        | 47,110               | <i>alni</i> (Linn.), <i>Acronicta</i> .....                     | 38,47,104      |
| <i>absoluta</i> (Meyr.), <i>Tuta</i> .....                                  | 3,171,206            | <i>alniaria</i> (Linn.), <i>Ennomos</i> .....                   | 47,105         |
| <i>acanthadactyla</i> (Hübner.), <i>Amblyptilia</i> .....                   | 284                  | <i>alopecuri</i> (Boisd.), <i>Mythimna</i> .....                | 29             |
| <i>aceriana</i> (Dup.), <i>Gypsonoma</i> .....                              | 288                  | <i>alpina</i> (Curtis), <i>Eudonia</i> .....                    | 292            |
| <i>aceris</i> (Frey), <i>Stigmella</i> .....                                | 3,270                | <i>alpinana</i> (Treits.), <i>Dichrorampha</i> .....            | 289            |
| <i>aceris</i> (Linn.), <i>Acronicta</i> .....                               | 47,109               | <i>alpinella</i> (Hübner.), <i>Platytes</i> .....               | 176            |
| <i>acetosae</i> (Staint.), <i>Enteucha</i> .....                            | 293                  | <i>alternata</i> (Müll.), <i>Epirrhoe</i> .....                 | 47,110         |
| <i>acroxantha</i> (Meyr.), <i>Tachystola</i> .....                          | 147,277              | <i>alternella</i> ([D. & S.]), <i>Tortricodes</i> .....         | 126,294,296    |
| <i>adippe</i> ([D. & S.]), <i>Argynnis</i> .....                            | 89                   | <i>amani</i> Svens., <i>Zimmermannia</i> .....                  | 271            |
| <i>adjunctella</i> Hodgkinson, <i>Coleophora</i> .....                      | 282                  | <i>amasina</i> (Draudt), <i>Nyctobrya</i> .....                 | 29             |
| <i>adscitella</i> Staint., <i>Elachista</i> .....                           | 283                  | <i>ambigua</i> ([D. & S.]), <i>Hoplodrina</i> .....             | 48,110         |
| <i>adspersella</i> Benander, <i>Coleophora</i> .....                        | 282                  | <i>amethystinella</i> Rag., <i>Coleophora</i> .....             | 282,294        |
| <i>adustata</i> ([D. & S.]), <i>Ligdia</i> .....                            | 47,108,246           | <i>amplana</i> (Hübner.), <i>Cydia</i> .....                    | 71,172,204,289 |
| <i>advenaria</i> (Hübner.), <i>Cepphis</i> .....                            | 37,44,47,180         | ANACAMPSINI .....   | 2              |
| <i>aegeria</i> (Linn.), <i>Pararge</i> .....                                | 89,231               | <i>anachoreta</i> ([D. & S.]), <i>Clostera</i> .....            | 180            |
| <i>aeneana</i> (Hübner.), <i>Commophila</i> .....                           | 227                  | <i>anceps</i> ([D. & S.]), <i>Apamea</i> .....                  | 38,48,106,245  |
| <i>aerugula</i> (Hübner.), <i>Nola</i> .....                                | 166,190              | <i>ancipitella</i> (LaHarpe), <i>Scoparia</i> .....             | 292            |
| <i>aescularia</i> ([D. & S.]), <i>Alsophila</i> .....                       | 47,110,126           | <i>andreaeformis</i> (Lasp.), <i>Synanthedon</i> .....          | 107            |
| <i>aestimaria</i> (Hübner.), <i>Chiasmia</i> .....                          | 165,166,180          | <i>anglicella</i> (Hübner.), <i>Agonopterix</i> .....           | 278            |
| <i>aestivaria</i> (Hübner.), <i>Hemithea</i> .....                          | 47,110               | <i>anglicella</i> (Staint.), <i>Parornix</i> .....              | 77,79          |
| <i>affinis</i> (Haw.), <i>Bryotropha</i> .....                              | 279                  | <i>angustella</i> (Hübner.), <i>Nephoterix</i> .....            | 174            |
| <i>agestis</i> ([D. & S.]), <i>Aricia</i> .....                             | 89,232               | <i>annularia</i> (Fabr.), <i>Cyclophora</i> .....               | 36,46          |
| <i>aglaja</i> (Linn.), <i>Argynnis</i> .....                                | 89,103,173           | <i>annulatella</i> (Curtis), <i>Rhigognostis</i> .....          | 295,297        |
| <i>agnotana</i> Rebel, <i>Pammene</i> .....                                 | 29                   | <i>antalis</i> (Hopffer), <i>Deudorix</i> .....                 | 2              |
| <i>alacella</i> (Zell.), <i>Dichomeris</i> .....                            | 3                    | <i>anthyllidella</i> (Hübner.), <i>Aproaerema</i> .....         | 279            |
| <i>albicans</i> Zell., <i>Coleophora</i> .....                              | 5                    | <i>antiqua</i> (Linn.), <i>Orgyia</i> .....                     | 77,79,110,239  |
| <i>albicapitella</i> (Scharf.), <i>Paraswammerdamia</i> .....               | 276                  | <i>antiopa</i> (Linn.), <i>Nymphalis</i> .....                  | 173            |
| <i>albiceps</i> (Zell.), <i>Parachronistis</i> .....                        | 281,294              | <b>APATETRINAE</b> .....  | 2              |
| <i>albicollata</i> (Linn.), <i>Mesoleuca</i> .....                          | 36,43,47,104         | APATETRINI .....  | 2              |
| <i>albifasciella</i> (Hein.), <i>Ectoedemia</i> .....                       | 271                  | <i>apfelbecki</i> (Rebel), <i>Rusina</i> .....                  | 110            |
| <i>albimaculla</i> (Borkh.), <i>Hadena</i> .....                            | 5                    | <i>aprilina</i> (Linn.), <i>Griposia</i> .....                  | 39,48,107      |
| <i>albipuncta</i> ([D. & S.]), <i>Mythimna</i> .....                        | 39,42,48,<br>147,240 | <i>arctostaphili</i> Meder, <i>Coleophora</i> .....             | 281            |
| <i>albipunctaria recte albipunctata</i> (Hufn.),<br><i>Cyclophora</i> ..... | 102                  | <i>arcuatella</i> (H.-S.), <i>Ectoedemia</i> .....              | 271            |
| <i>albipunctella</i> ([D. & S.]), <i>Depressaria</i> .....                  | 278,296              | <i>areola</i> (Esp.), <i>Xylocampa</i> .....                    | 48,110         |
| <i>albistria</i> (Haw.), <i>Argyresthia</i> .....                           | 295                  | <i>argentimaculella</i> (Staint.), <i>Infurcitinea</i> .....    | 272            |
| <i>albitarsella</i> Zell., <i>Coleophora</i> .....                          | 282                  | <i>argentana</i> (Clerck), <i>Eana</i> .....                    | 73             |
| <i>albuginana</i> (Guen.), <i>Pammene</i> .....                             | 260 (photo),290      | <i>argentula</i> (Sterph.), <i>Coleophora</i> .....             | 297            |
| <i>albula</i> ([D. & S.]), <i>Meganola</i> .....                            | 39,48,240            | <i>argiolus</i> (Linn.), <i>Celastrina</i> .....                | 89             |
| <i>albulata</i> (Hufn.), <i>Asthenia</i> .....                              | 109                  | <i>argus</i> (Linn.), <i>Plebejus</i> .....                     | 89             |
| <i>albulata</i> ([D. & S.]), <i>Perizoma</i> .....                          | 36,47,106            | <i>argyrana</i> (Hübner.), <i>Pammene</i> .....                 | 290            |
| <i>alburnella</i> (Zell.), <i>Carpatolechia</i> .....                       | 281                  | <i>argyropeza</i> (Zell.), <i>Ectoedemia</i> .....              | 296            |
|   |                      | <i>aridella</i> (Thunb.), <i>Pediasia</i> .....                 | 293            |
|   |                      | <i>armigera</i> (Hübner.), <i>Helicoverpa</i> ...71,165,166,199 |                |
|   |                      | <i>artemisiae</i> (Hufn.), <i>Cucullia</i> .....                | 204            |

|  |                        |
|--|------------------------|
| <i>artemiscolella</i> Bruand, <i>Coleophora</i> .....                              | 282                    |
| <i>asbolaea</i> (Meyr.), <i>Barea</i> .....  | 297                    |
| <i>assectella</i> (Zell.), <i>Acrolepiopsis</i> .....                              | 3                      |
| <i>assimilata</i> Doubl., <i>Eupithecia</i> .....                                  | 105,114                |
| <i>assimilella</i> (Zell.), <i>Stigmella</i> .....                                 | 270,296                |
| <i>atalanta</i> (Linn.), <i>Vanessa</i> .....                                      | 89,192,226             |
| <i>atomaria</i> (Linn.), <i>Ematurga</i> .....                                     | 32,37,47,105,229       |
| <i>atricapitana</i> (Steph.), <i>Cochylischroa</i> .....                           | 287                    |
| <i>atricapitella</i> (Haw.), <i>Stigmella</i> .....                                | 270                    |
| <i>atricollis</i> (Staint.), <i>Ectoedemia</i> .....                               | 271,296                |
| <i>atricomella</i> Staint., <i>Elachista</i> .....                                 | 283                    |
| <i>atrifrontella</i> (Staint.), <i>Zimmermannia</i><br>( <i>Ectoedemia</i> ) ..... | 5,271                  |
| <i>atriplicella</i> (F. v. R.), <i>Scrobipalpa</i> .....                           | 280                    |
| <i>atriplicis</i> (Linn.), <i>Trachea</i> .....                                    | 166,187                |
| <i>atropos</i> (Linn.), <i>Acherontia</i> .....                                    | 177,205                |
| <i>atr punctana</i> (Zett.), <i>Hedya</i> .....                                    | 287                    |
| <i>augur</i> (Fabr.), <i>Graphiphora</i> .....                                     | 39,48,105,245          |
| <i>aurago</i> ([D. & S.]), <i>Tiliacea</i> .....                                   | 48,104                 |
| <i>aurantiaria</i> (Hübner.), <i>Agriopsis</i> .....                               | 108,125,126            |
| <i>aurata</i> (Scop.), <i>Pyrausta</i> .....                                       | 4,291                  |
| <i>aureatella</i> (Scop.), <i>Micropterix</i> .....                                | 269                    |
| <i>aurella</i> (Fabr.) agg., <i>Stigmella</i> .....                                | 78,79,270              |
| <i>aurinia</i> (Rott.), <i>Euphydryas</i> .....                                    | 89                     |
| <i>aurita</i> Razowski, <i>Pammene</i> .....                                       | 290                    |
| <i>aurofasciana</i> (Haw.), <i>Celypha</i> .....                                   | 287                    |
| <i>autumnata</i> (Borkh.), <i>Epirrita</i> .....                                   | 110                    |
| <i>aversata</i> (Linn.), <i>Idaea</i> .....  | 46,110                 |
| <i>azaleella</i> (Brants), <i>Caloptilia</i> .....                                 | 77,80,83               |
| BACTRINI .....   | 2                      |
| <i>badiata</i> ([D. & S.]), <i>Anticlea</i> .....                                  | 40,47,110              |
| <i>badiella</i> (Hübner.), <i>Depressaria</i> .....                                | 278                    |
| <i>baja</i> ([D. & S.]), <i>Xestia</i> .....                                       | 48                     |
| <i>bajularia</i> ([D. & S.]), <i>Comibaena</i> .....                               | 104,244                |
| <i>balkanica</i> (Rebel), <i>Eochorica</i> .....                                   | 25, 27 (photo)         |
| <i>baliodactylus</i> (Zell.), <i>Merrifieldia</i> .....                            | 285                    |
| <i>bankiana</i> (Fabr.), <i>Deltote</i> .....                                      | 186                    |
| <i>basaltinella</i> (Zell.), <i>Bryotropha</i> .....                               | 279                    |
| <i>basigutella</i> (Hein.), <i>Stigmella</i> .....                                 | 270                    |
| <i>batis</i> (Linn.), <i>Thyatira</i> .....  | 34,46,108              |
| <i>beatricella</i> (Wals.), <i>Aethes</i> .....                                    | 4,286                  |
| <i>bechsteinella</i> (Bechstein & Scharfenburg),<br><i>Bucculatrix</i> .....       | 77,79,82               |
| <i>bellargus</i> (Rott.), <i>Lysandra</i> .....                                    | 31,89                  |
| <i>bembeciformis</i> (Hübner.), <i>Sesia</i> .....                                 | 148                    |
| <i>bennetii</i> (Curt.), <i>Agdistis</i> .....                                     | 148,284                |
| <i>berbera</i> Rungs, <i>Amphipyra</i> .....                                       | 34,38,47,110           |
| <i>betulae</i> (Goeze), <i>Ortholepis</i> .....                                    | 173                    |
| <i>betulae</i> (Linn.), <i>Thecla</i> .....  | 88,89                  |
| <i>betulae</i> (Staint.), <i>Parornix</i> .....                                    | 274                    |
| <i>betularia</i> (Linn.), <i>Biston</i> .....                                      | 47,110                 |
| <i>betuletana</i> (Haw.), <i>Apotomis</i> .....                                    | 287                    |
| <i>betulicola</i> (Staint.), <i>Stigmella</i> .....                                | 269                    |
| <i>bicolorana</i> (Fuessly), <i>Bena</i> .....                                     | 39,44,48,108           |
| <i>bicolorata</i> (Hufn.), <i>Hecatera</i> .....                                   | 39,48,104              |
| <i>bicostella</i> (Clerck), <i>Pleurota</i> .....                                  | 277                    |
| <i>bicruris</i> (Hufn.), <i>Hadena</i> .....                                       | 48,110,301 (photos)    |
| <i>bideniata</i> (Clerck), <i>Odontopera</i> .....                                 | 47,110                 |
| <i>bifaciata</i> (Haw.), <i>Perizoma</i> .....                                     | 36,47,110,114          |
| <i>bifasciana</i> (Haw.), <i>Piniophila</i> .....                                  | 287                    |
| <i>bifasciana</i> (Hübner.), <i>Spatalistis</i> .....                              | 286                    |
| <i>bifasciata</i> Petagna, <i>Grammodes</i> .....                                  | 1                      |
| <i>bilineata</i> (Linn.), <i>Campitogramma</i> .....                               | 41,47,110              |
| <i>bilunana</i> (Haw.), <i>Epinotia</i> .....                                      | 288                    |
| <i>bimaculata</i> (Fabr.), <i>Lomographa</i> .....                                 | 47,110                 |
| <i>binaria</i> (Hufn.), <i>Watsonalla</i> .....                                    | 34,46,110              |
| <i>binderella</i> (Kollar), <i>Coleophora</i> .....                                | 282                    |
| <i>bipunctaria</i> ([D. & S.]), <i>Scotopteryx</i> .....                           | 36,41,45,46            |
| <i>bipunctella</i> (Fabr.), <i>Ethmia</i> .....                                    | 278                    |
| <i>bipunctidactyla</i> (Scop.), <i>Stenoptilia</i> .....                           | 284                    |
| <i>biriviata</i> (Borkh.), <i>Xanthorhoe</i> .....                                 | 5                      |
| <i>biselata</i> (Hufn.), <i>Idaea</i> .....  | 110                    |
| <i>bissellitella</i> Hummel, <i>Tineola</i> .....                                  | 272                    |
| <i>bistriatella</i> (Hulst), <i>Apomyelois</i> .....                               | 4                      |
| <i>biviella</i> (Zell.), <i>Vitula</i> .....                                       | 291                    |
| <i>blancardella</i> (Fabr.), <i>Phyllonorycter</i> .....                           | 77,78,79,<br>141, 274  |
| <i>blanda</i> ([D. & S.]), <i>Hoplodrina</i> .....                                 | 48,110                 |
| <i>blandulella</i> (Tutt), <i>Caryocolum</i> .....                                 | 281                    |
| <i>blomeri</i> (Curtis), <i>Discoloxia</i> .....                                   | 36,44,47               |
| <i>boeticus</i> (Linn.), <i>Lampides</i> .....                                     | 173                    |
| <i>bombycina</i> (Hufn.), <i>Polia</i> .....                                       | 39,48,103,108          |
| <i>borella</i> (Dougl.), <i>Bryotropha</i> .....                                   | 3,279                  |
| <i>Boudenotiana</i> Leraut .....   | 2                      |
| <i>bradleyi</i> Riedl, <i>Mompha</i> .....   | 4,283                  |
| <i>brassicae</i> (Linn.), <i>Mamestra</i> .....                                    | 48,110                 |
| <i>brassicella</i> (Linn.), <i>Pieris</i> .....                                    | 89,226                 |
| <i>Brevicornutia</i> Razowski, 1960 .....  | 2                      |
| <i>breviculata</i> (Donzel), <i>Eupithecia</i> .....                               | 1                      |
| <i>britannica</i> (Turner), <i>Thera</i> .....                                     | 47, 110                |
| <i>britanniodactylus</i> (Gregson), <i>Capperia</i> .....                          | 285                    |
| <i>brogniardella</i> (Fabr.), <i>Acrocercops</i> .....                             | 274                    |
| <i>brumata</i> (Linn.), <i>Operophtera</i> .....                                   | 47,110,125,<br>126,239 |
| <i>Bryopsis</i> Boursin .....  | 2                      |
| <i>brunnea</i> ([D. & S.]), <i>Diarsia</i> .....                                   | 48,108                 |
| <i>brunnichana</i> (Linn.), <i>Epinotia</i> .....                                  | 288                    |
| <i>brunnichella</i> (Linn.), <i>Stephensia</i> .....                               | 294                    |
| <i>bucephala</i> (Linn.), <i>Phalera</i> .....                                     | 47,110                 |
| <i>buoliana</i> ([D. & S.]), <i>Rhyacionia</i> .....                               | 289                    |
| <i>caeruleocephala</i> (Linn.), <i>Diloba</i> .....                                | 106,111                |
| <i>caesiella</i> (Hübner), <i>Swammerdamia</i> .....                               | 276                    |
| <i>caespiitella</i> Zell., <i>Coleophora</i> .....                                 | 282                    |
| <i>cagnagella</i> (Hübner.), <i>Yponomeuta</i> .....                               | 293                    |
| <i>caja</i> (Linn.), <i>Arctia</i> .....   | 38,47,103,106,146      |
| <i>c-album</i> (Linn.), <i>Polygonia</i> .....                                     | 88,89,232              |
| <i>calendulae</i> Treits., <i>Cucullia</i> .....                                   | 5                      |
| <i>camilla</i> (Linn.), <i>Limenitis</i> .....                                     | 89                     |
| <i>candelisequa</i> ([D. & S.]), <i>Dichagyris</i> .....                           | 29                     |
| <i>candidula</i> ([D. & S.]), <i>Pseudeustrotia</i> .....                          | 69,166,187             |
| <i>cappa</i> (Hübner.), <i>Hecatera</i> .....                                      | 28 (photo), 29         |
| <i>caprana</i> (Fabr.), <i>Epinotia</i> .....                                      | 288                    |
| <i>capreolaria</i> ([D. & S.]), <i>Pungeleria</i> .....                            | 166,180                |
| <i>caprimulgella</i> (Staint.),<br><i>Triaxomasia</i> .....                        | 250 (photo), 272       |
| <i>capucina</i> (Linn.), <i>Ptilodon</i> .....                                     | 47,110                 |



|   |                         |
|---|-------------------------|
| <i>caradjai</i> Popescu-Gorg & Căpușe,                    |                         |
| <i>Oegoconia</i> .....                                    | 277                     |
| <i>cararia</i> (Hübner), <i>Stegania</i> .....            | 165,180                 |
| <i>cardamines</i> (Linn.), <i>Anthocharis</i> .....       | 89,226                  |
| <i>cardui</i> (Linn.), <i>Vanessa</i> .....               | 69,192,226,303 (photos) |
| <i>carmelita</i> (Esp.), <i>Odontotia</i> .....           | 108                     |
| <i>carpinata</i> (Borkh.), <i>Trichopteryx</i> .....      | 105                     |
| <i>carpinella</i> (Frey), <i>Parornix</i> .....           | 20 (photo)              |
| <i>catalaunalis</i> (Dup.), <i>Antigastra</i> .....       | 165,167,168,175         |
| <i>catharticella</i> (Staint.), <i>Stigmella</i> .....    | 270                     |
| <i>celerio</i> (Linn.), <i>Hippotion</i> .....            | 168,178,203             |
| <i>centrago</i> (Haw.), <i>Aethmia</i> .....              | 48,110                  |
| <i>centaureata</i> ([D. & S.]), <i>Eupithecia</i> .....   | 47,110                  |
| <i>cerasi</i> , (Fabr.), <i>Orthosia</i> .....            | 40,48,110               |
| <i>cerasicolella</i> (H.-S.), <i>Phyllonorycter</i> ..... | 77,78,82,83             |
| <i>cerinalis</i> (Scop.), <i>Hydria</i> .....             | 36,47                   |
| <i>cespitis</i> ([D. & S.]), <i>Tholera</i> .....         | 41,48                   |
| <i>chalcites</i> (Esp.), <i>Chrysodeixis</i> .....        | 185                     |
| <i>chamomillae</i> ([D. & S.]), <i>Cucullia</i> .....     | 38,47                   |
| CHELANINI .....   | 2                       |
| <i>chenopodiata</i> (Linn.), <i>Scotopteryx</i> .....     | 46,110                  |
| <i>chlorosata</i> (Scop.), <i>Petrophora</i> .....        | 105                     |
| <i>choragella</i> ([D. & S.]), <i>Morphaga</i> .....      | 3                       |
| <i>chrysis</i> (Linn.), <i>Diachrysia</i> .....           | 47,110                  |
| <i>chrysolepidella</i> (Zell.), <i>Paracrania</i> .....   | 3,269                   |
| <i>chryson</i> (Esp.), <i>Diachrysia</i> .....            | 108,111,                |
| 242 (photo),262 (photo)                                   |                         |
| <i>chrysoprasaria</i> (Esp.), <i>Hemistola</i> .....      | 4,47,109                |
| <i>cicatricella</i> (Zett.), <i>Eriocrania</i> .....      | 269                     |
| <i>cilialis</i> (Hübner), <i>Nascia</i> .....             | 292                     |
| <i>cilium</i> (Guen.), <i>Spodoptera</i> .....            | 5,168,187               |
| <i>cinctella</i> (Clerck), <i>Aproaerema</i> .....        | 294                     |
| <i>cinerea</i> ([D. & S.]), <i>Agrotis</i> .....          | 39,41,48                |
| <i>cinereana</i> (Haw.), <i>Epinotia</i> .....            | 4,288                   |
| <i>cinereopunctella</i> (Haw.), <i>Elachista</i> .....    | 283                     |
| <i>cinnamomeana</i> (Treits.), <i>Pandemis</i> .....      | 285                     |
| <i>cinxia</i> (Linn.), <i>Melitaea</i> .....              | 97                      |
| <i>cinctella</i> (Clerck), <i>Aproaerema</i>              |                         |
| ( <i>Syncopacma</i> ) .....                               | 279                     |
| <i>circellaris</i> (Hufner), <i>Agrochola</i> .....       | 39,48,104               |
| <i>circumvoluta</i> Geoff., <i>Myelois</i> .....          | 291                     |
| <i>cirrigerella</i> (Zinck.), <i>Eurhodope</i> .....      | 2,295                   |
| <i>citrago</i> (Linn.), <i>Tiliacea</i> .....             | 107                     |
| <i>citrate</i> (Linn.), <i>Dysstroma</i> .....            | 110                     |
| <i>citrella</i> Staint., <i>Phyllocnistis</i> .....       | 75,268,275              |
| <i>citri</i> (Mill.), <i>Prays</i> .....                  | 170                     |
| <i>citralis</i> (Scop.), <i>Hypercallia</i> .....         | 2                       |
| <i>clathrata</i> (Linn.), <i>Chiasmia</i> .....           | 37,44,47,106            |
| <i>claustrella</i> (Bruand), <i>Bacotia</i> .....         | 3                       |
| <i>clavaria</i> Haw. <i>Larentia</i> .....                | 107                     |
| <i>clavipalpis</i> (Scop.), <i>Caradrina</i> .....        | 71,110,126              |
| <i>clavis</i> (Hufner), <i>Agrotis</i> .....              | 48,110                  |
| <i>clerkella</i> (Linn.), <i>Lyonetia</i> .....           | 78,79,80,82,            |
| 84 (photos),85  |                         |
| <i>clintoni</i> Povolný, <i>Scrobipalpa</i> .....         | 280                     |
| <i>cloacella</i> (Haw.), <i>Nemapogon</i> .....           | 272                     |
| <i>c-nigrum</i> (Linn.), <i>Xestia</i> .....              | 41,48,110               |
| <i>Cochylichroa</i> Obratzov & Swatschek .....            | 2                       |
| <i>Cochylis</i> Treits. ....                              | 2                       |
| <i>comae</i> A. Schmidt, <i>Timandra</i> .....            | 46,71,110               |
| <i>comes</i> (Hübner), <i>Noctua</i> .....                | 48,110                  |
| <i>comma</i> (Linn.), <i>Hesperia</i> .....               | 31,89                   |
| <i>comma</i> (Linn.), <i>Leucania</i> .....               | 48,110                  |
| <i>comparella</i> (Dup.), <i>Phyllonorycter</i> ..        | 146 (photo),            |
| 150,275   |                         |
| <i>complana</i> (Linn.), <i>Eilema</i> .....              | 47                      |
| <i>confusa</i> (Hufner), <i>Hadena</i> .....              | 39,48                   |
| <i>confusa</i> (Steph.), <i>Macdunnoughia</i> ..          | 147,185,240             |
| <i>confusalis</i> (H.-S.), <i>Nola</i> .....              | 107                     |
| <i>confusalis</i> (Wood), <i>Stigmella</i> .....          | 293                     |
| <i>congelatella</i> (Clerck), <i>Exapate</i> .....        | 285                     |
| <i>conicolana</i> (Heyl.), <i>Cydia</i> .....             | 295                     |
| <i>conigera</i> ([D. & S.]), <i>Mythimna</i> .....        | 48,110                  |
| <i>consimilana</i> (Hübner), <i>Clepsis</i> .....         | 295                     |
| <i>consonaria</i> (Hübner), <i>Paradarisa</i> ..          | 37,44,47,109            |
| <i>consortella</i> Staint., <i>Elachista</i> .....        | 283                     |
| <i>conspersaria</i> ([D. & S.]), <i>Dyscia</i> .....      | 22                      |
| <i>conspicua</i> Zell., <i>Coleophora</i> .....           | 282                     |
| <i>contaminella</i> (Hübner), <i>Exasia</i> .....         | 293                     |
| <i>contigua</i> ([D. & S.]), <i>Lacanobia</i> .....       | 29, 43,48               |
| <i>contritella</i> (Walk.), <i>Trachypepla</i> .....      | 277                     |
| <i>conturbatella</i> (Hübner), <i>Mompha</i> .....        | 283                     |
| <i>continua</i> (Staint.), <i>Stigmella</i> .....         | 270,296                 |
| <i>contritella</i> (Walk.), <i>Trachypepla</i> .....      | 60,205                  |
| <i>convolvuli</i> (Linn.), <i>Agrius</i> .....            | 34,46,71,194            |
| <i>coridon</i> (Poda), <i>Lysandra</i> .....              | 31,89                   |
| <i>corylata</i> (Thunb.), <i>Electrophaes</i> .....       | 47, 110                 |
| <i>coryli</i> (Linn.), <i>Colocasia</i> .....             | 47,110,113              |
| <i>corylifoliella</i> (Hübner), <i>Phyllonorycter</i> ..  | 75                      |
| <i>cosmophorana</i> (Treits.), <i>Cydia</i> .....         | 289                     |
| <i>costaestrigalis</i> (Steph.), <i>Schrankia</i> .....   | 108,245                 |
| <i>costella</i> (Hump. & Westw.), <i>Scrobipalpa</i> ..   | 281                     |
| <i>costipunctana</i> (Haw.), <i>Epiblema</i> .....        | 288                     |
| <i>craccae</i> ([D. & S.]), <i>Lygephila</i> .....        | 5                       |
| <i>crassalis</i> (Fabr.), <i>Hypana</i> .....             | 181                     |
| <i>crataegella</i> (Linn.), <i>Scythropia</i> .....       | 277                     |
| <i>crataegi</i> (Linn.), <i>Aporia</i> .....              | 88                      |
| <i>crataegi</i> (Linn.), <i>Trichiura</i> .....           | 34,46,103,107           |
| <i>crenata</i> (Hufner), <i>Apamea</i> .....              | 110                     |
| <i>crepuscularia</i> ([D. & S.]), <i>Ectropis</i> ..      | 40,47,105,110           |
| <i>cribraria</i> (Linn.), <i>Coscinia</i> .....           | 181                     |
| <i>cribrellum</i> (Eversm.) <i>Muschampia</i> .....       | 22                      |
| <i>cristana</i> ([D. & S.]), <i>Acleris</i> .....         | 126,286                 |
| <i>cristatella</i> (Zell.), <i>Bucculatrix</i> .....      | 273                     |
| <i>croceago</i> ([D. & S.]), <i>Jodia</i> .....           | 2                       |
| <i>crocealis</i> (Hübner), <i>Anania</i> .....            | 292                     |
| <i>croceus</i> (Geoff.), <i>Colias</i> .....              | 191,231                 |
| <i>crociocapitella</i> (Clemens), <i>Monopis</i> .....    | 273                     |
| <i>croesella</i> (Scop.), <i>Adela</i> .....              | 272                     |
| <i>cruda</i> ([D. & S.]), <i>Orthosia</i> .....           | 48,110,126              |
| <i>cryptella</i> (Stdr), <i>Trifurcula</i> .....          | 270,293                 |
| <i>cuculata</i> (Hufner), <i>Catarhoe</i> .....           | 36,46,103,108           |
| <i>cucullatella</i> (Linn.), <i>Nola</i> .....            | 48,110                  |
| <i>cucullina</i> ([D. & S.]), <i>Ptilodon</i> .....       | 45                      |
| <i>cuculipennella</i> (Hübner), <i>Caloptilia</i> ..      | 273                     |
| <i>culmella</i> (Linn.), <i>Chrysoteuchia</i> .....       | 299                     |

|   |                                       |
|---|---------------------------------------|
| <i>cultraria</i> (Fabr.), <i>Watsonalla</i> .....                     | 34,35,46,104,<br>111,299              |
| <i>cupressella</i> (Wals.), <i>Argyresthia</i> .....                  | 276                                   |
| <i>cupriacella</i> (Hübner.), <i>Nemophora</i> .....                  | 272                                   |
| <i>curtula</i> (Linn.), <i>Clostera</i> .....                         | 105                                   |
| <i>curvatula</i> (Borkh.), <i>Drepana</i> .....                       | 165,177                               |
| <i>cyaneimarmorella</i> (Mill.), <i>Stenoptinea</i> .....             | 27                                    |
| <i>cytisella</i> (Curtis), <i>Monochroa</i> .....                     | 280                                   |
| <i>daplidice</i> (Linn.), <i>Pontia</i> .....                         | 88                                    |
| <i>daubei</i> (Boisd.), <i>Thysanoplusia</i> .....                    | 5                                     |
| <i>dealbana</i> (Fröhl.), <i>Gypsonoma</i> .....                      | 295                                   |
| <i>deaurana</i> (Peyer.), <i>Aethes</i> * .....                       | 165,166,171,286                       |
| <i>deauratella</i> (H.-S.), <i>Oegoconia</i> .....                    | 3,277                                 |
| <i>deauratella</i> Lien. & Zell., <i>Coleophora</i> .....             | 282                                   |
| <i>decentella</i> (H.-S.), <i>Etainia</i> ( <i>Ectoedemia</i> ) ..... | 271,296                               |
| <i>deceptorata</i> (Scop.), <i>Deltote</i> .....                      | 166,186                               |
| <i>decimalis</i> (Poda), <i>Tholera</i> .....                         | 48,110                                |
| <i>decolorata</i> (Esp.), <i>Xanthorhoe</i> .....                     | 132                                   |
| <i>decorella</i> (Haw.), <i>Carpatolechia</i> .....                   | 281                                   |
| <i>defoliaria</i> (Clerck), <i>Erannia</i> .....                      | 47,110,125,126                        |
| <i>degeneraria</i> (Hübner.), <i>Idaea</i> .....                      | 178                                   |
| <i>delphinii</i> (Linn.), <i>Periphanes</i> .....                     | 29                                    |
| <i>delunella</i> (Staint.), <i>Eudonia</i> .....                      | 176,292,295                           |
| <i>denotata</i> (Hübner.) subsp.<br><i>jasionaeata</i> Crewe .....    | 117 (photos)                          |
| <i>dentaria</i> (Fabr.), <i>Selenia</i> .....                         | 40,47,110                             |
| <i>dentella</i> (Fabr.), <i>Ypsolopha</i> .....                       | 276                                   |
| <i>derivata</i> ([D. & S.]), <i>Anticlea</i> .....                    | 36,40,47,110                          |
| <i>deshaisiana</i> (Lucas), <i>Cydia</i> .....                        | 6                                     |
| <i>designata</i> (Hufn.), <i>Xanthorhoe</i> .....                     | 106,111                               |
| <i>devoniella</i> (Staint.), <i>Parornix</i> .....                    | 77,80                                 |
| <i>didyma</i> (Esp.), <i>Mesapamea</i> .....                          | 235 (photos)                          |
| <i>didymata</i> (Linn.), <i>Mesotype</i> .....                        | 109                                   |
| <i>diffinis</i> (Haw.), <i>Teleiopsis</i> .....                       | 281                                   |
| <i>dilectella</i> Zell., <i>Argyresthia</i> .....                     | 276                                   |
| <i>dilutata</i> ([D. & S.]), <i>Epirrita</i> .....                    | 34,47,110                             |
| <i>dimidiata</i> (Hufn.), <i>Idaea</i> .....                          | 46,110                                |
| <i>dispar</i> (Linn.), <i>Lymantria</i> .....                         | 4,147,181,239                         |
| <i>distans</i> (Zell.), <i>Oxyptilus</i> .....                        | 285                                   |
| <i>distinctata</i> (H.-S.), <i>Aleucis</i> .....                      | 40                                    |
| <i>ditrapezium</i> ([D. & S.]), <i>Xestia</i> .....                   | 109,111                               |
| <i>divisella</i> H.-S., <i>Mompha</i> .....                           | 283                                   |
| <i>dodeceea</i> (Haw.), <i>Ethmia</i> .....                           | 3,171                                 |
| <i>dodonaea</i> ([D. & S.]), <i>Drymonia</i> .....                    | 37,47,107                             |
| <i>dolabraria</i> (Linn.), <i>Plagodis</i> .....                      | 47,108                                |
| <i>domestica</i> (Haw.), <i>Bryotropha</i> .....                      | 110,294                               |
| <i>dominula</i> (Linn.), <i>Callimorpha</i> .....                     | 38,47,108,113,<br>146,181,242 (photo) |
| <i>douglasella</i> Staint., <i>Depressaria</i> .....                  | 278                                   |
| <i>drenowskii</i> (Rebel), <i>Hadena</i> .....                        | 22,28 (photo),29                      |
| <i>dromedarius</i> (Linn.), <i>Notodonta</i> .....                    | 47,110                                |
| <i>dubitana</i> (Hübner.), <i>Neocochylis</i> .....                   | 286                                   |
| <i>dubitata</i> (Linn.), <i>Triphosa</i> .....                        | 36,47,109                             |
| <i>dubitella</i> (H.-S.), <i>Phyllonorycter</i> .....                 | 274                                   |
| <i>dumetata</i> (Treits.), <i>Odontognophos</i> .....                 | 26                                    |
| <i>ecphaea</i> (Hamps.), <i>Araeopteron</i> .....                     | 12 (photos)                           |
| <i>Ectoedemia</i> Busck .....   | 2                                     |
| <i>efformata</i> (Guen.), <i>Aplocera</i> .....                       | 47                                    |

|   |                           |
|---|---------------------------|
| <i>effusa</i> (Boisd.), <i>Amphipyra</i> * .....                            | 165,166,186               |
| <i>egenaria</i> H.-S., <i>Eupithecia</i> .....                              | 4                         |
| <i>ekebladella</i> (Bjerk.), <i>Tischeria</i> .....                         | 296                       |
| <i>electa</i> (View.), <i>Catocala</i> .....                                | 166,167,183               |
| <i>elegans</i> (Evers.), <i>Chersotis</i> .....                             | 2,28 (photo),29           |
| <i>elinguarua</i> (Linn.), <i>Crocallis</i> .....                           | 47,110                    |
| <i>elpenor</i> (Linn.), <i>Deilephila</i> .....                             | 34,46,105                 |
| <i>emargana</i> (Fabr.), <i>Acleris</i> .....                               | 286                       |
| <i>emarginata</i> (Linn.), <i>Idaea</i> .....                               | 36,44,46,109              |
| <i>emberizaepennella</i> (Bouché),<br><i>Phyllonorycter</i> 77,80,275 ..... |                           |
| <i>emortualis</i> ([D. & S.]), <i>Trisateles</i> .....                      | 182,204                   |
| ENDOTHEMIINI .....  | 2                         |
| <i>epilobiella</i> ([D. & S.]), <i>Mompha</i> .....                         | 283                       |
| <i>Epirrita</i> Hübn. .....   | 126                       |
| <i>epomidion</i> (Haw.), <i>Apamea</i> .....                                | 38,48,105                 |
| <i>eremita</i> (Fabr.), <i>Dryobotodes</i> .....                            | 104                       |
| <i>ericetella</i> (Geyer), <i>Neofaculta</i> .....                          | 279                       |
| <i>ericinella</i> (Zell.), <i>Aristotelia</i> .....                         | 3,149,279                 |
| <i>erosaria</i> ([D. & S.]), <i>Ennomos</i> .....                           | 47,110                    |
| <i>erythrocephala</i> ([D. & S.]), <i>Conistra</i> .....                    | 188                       |
| <i>esperella</i> (Goeze), <i>Phyllonorycter</i> .....                       | 3                         |
| <i>Etainia</i> Beirne .....   | 2                         |
| <i>euphorbiae</i> (Linn.), <i>Hyles</i> .....                               | 177                       |
| <i>euphrosyne</i> (Linn.), <i>Boloria</i> .....                             | 89                        |
| <i>eutychea</i> Treits., <i>Catocala</i> .....                              | 32                        |
| <i>exclamatioris</i> (Linn.), <i>Agrotis</i> .....                          | 48,110                    |
| <i>exanthemata</i> (Scop.), <i>Cabera</i> .....                             | 47,110                    |
| <i>exigua</i> (Hübner.), <i>Spodoptera</i> .....                            | 166,200                   |
| <i>exiguata</i> (Hübner.), <i>Eupithecia</i> .....                          | 110                       |
| <i>exsiccata</i> (Led.), <i>Tathorhynchus</i> .....                         | 165,182,204               |
| <i>exsoleta</i> (Linn.), <i>Xylena</i> .....                                | 188                       |
| <i>extimalis</i> (Scop.) <i>Evergestis</i> .....                            | 176,292                   |
| <i>extrema</i> (Hübner.), <i>Photedes</i> .....                             | 187                       |
| <i>fagella</i> ([D. & S.]), <i>Diurnea</i> .....                            | 77,79,278                 |
| <i>fagi</i> (Linn.), <i>Stauropus</i> .....                                 | 37,47,107,245             |
| <i>fagiglandana</i> (Zell.), <i>Cydia</i> .....                             | 289                       |
| <i>fagivora</i> (Frey), <i>Parornix</i> .....                               | 274                       |
| <i>falcataria</i> (Linn.), <i>Drepana</i> .....                             | 46,110                    |
| <i>falciformis</i> (Haw.), <i>Epermenia</i> .....                           | 285                       |
| <i>falconipennella</i> (Hübner.), <i>Caloptilia</i> .....                   | 273                       |
| <i>fallouella</i> (Rag.) <i>Acrobasis</i> .....                             | 1,267,291                 |
| <i>falsella</i> ([D. & S.]), <i>Catoptria</i> .....                         | 4,293                     |
| <i>fascelinella</i> (Hübner.), <i>Pediasia</i> .....                        | 176                       |
| <i>fasciana</i> (Linn.), <i>Pammene</i> .....                               | 290                       |
| <i>fasciaria</i> (Linn.), <i>Hylaea</i> .....                               | 37,44,47,104              |
| <i>fasciuncula</i> (Haw.), <i>Oligia</i> .....                              | 48,110                    |
| <i>fenestratella</i> (Heyd.), <i>Monopis</i> .....                          | 3                         |
| <i>ferrago</i> (Fabr.), <i>Mythimna</i> .....                               | 48,110                    |
| <i>ferrugalis</i> (Hübner.), <i>Udea</i> .....                              | 71,192                    |
| <i>ferrugata</i> (Clerck), <i>Xanthorhoe</i> .....                          | 46,110                    |
| <i>ferruginea</i> (Esp.), <i>Rusina</i> .....                               | 48                        |
| <i>festucae</i> (Linn.), <i>Plusia</i> .....                                | 29                        |
| <i>fibuella recte fibulella</i> ([D. & S.]), <i>Cauchas</i> ..              | 272                       |
| <i>fidella</i> (Reutti), <i>Caloptilia</i> * .....                          | 217,267,273               |
| <i>figulella</i> (Gregson), <i>Cadra</i> .....                              | 291                       |
| <i>filicivora</i> (Meyr.), <i>Psychoides</i> .....                          | 148,273                   |
| <i>filipendulae</i> (Linn.), <i>Zygaena</i> .....                           | 44,46,103,109,<br>226,260 |

|   |                           |
|---|---------------------------|
| <i>filipendulae</i> (Wocke), <i>Stigmella</i> .....             | 270                       |
| <i>fimbriata</i> (Schreb.), <i>Noctua</i> .....                 | 48,110,110                |
| <i>firmata</i> (Hüb.), <i>Pennithera</i> .....                  | .....                     |
| <i>flammae</i> ([D.& S.]), <i>Panolis</i> .....                 | 39,44,48                  |
| <i>flammae</i> (Curtis), <i>Senta</i> .....                     | 165,189                   |
| <i>flammae</i> (Esp.), <i>Trigonophora</i> .....                | 168,188                   |
| <i>flammeolaria</i> (Hufn.), <i>Hydrelia</i> .....              | 36,47,109                 |
| <i>flavago</i> ([D.& S.]), <i>Gortyna</i> .....                 | 106                       |
| <i>flavicincta</i> ([D.& S.]), <i>Polymixis</i> .....           | 106                       |
| <i>flavicornis</i> (Linn.), <i>Achlya</i> .....                 | 46,109                    |
| <i>flavifrontella</i> ([D.& S.]), <i>Agnoea</i> .....           | 278                       |
| <i>flaviventris</i> (Stdgr), <i>Synanthedon</i> 148,149 (photo) |                           |
| <i>flavofasciata</i> (Thunb.), <i>Perizoma</i> .....            | 37,47,102,108             |
| <i>flexula</i> ([D.& S.]), <i>Laspeyria</i> .....               | 38,47,104,244             |
| <i>floslactata</i> (Haw.), <i>Scopula</i> .....                 | 105,114                   |
| <i>floslactella</i> (Haw.), <i>Stigmella</i> .....              | 270                       |
| <i>fluctuata</i> (Linn.), <i>Xanthorhoe</i> .....               | 46,110                    |
| <i>fluxa</i> (Hüb.), <i>Photedes</i> .....                      | 102,107,187               |
| <i>Fomoria</i> Beirne .....                                     | 2                         |
| <i>forficalis</i> (Linn.), <i>Evergestis</i> .....              | 292                       |
| <i>forficella</i> (Scop.), <i>Harpella</i> .....                | 277                       |
| <i>formosa</i> Rogenhofer, <i>Cucullia</i> ..22,27 (photo),29   |                           |
| <i>formosana</i> (Scop.), <i>Enarmonia</i> .....                | 287,296                   |
| <i>fovealis</i> Zell., <i>Duponchelia</i> .....                 | 175,292,295               |
| <i>fraternana</i> (Haw.), <i>Epinotia</i> .....                 | 288                       |
| <i>fraxinella</i> (Bjerk.), <i>Prays</i> .....                  | 277                       |
| <i>fraxini</i> (Linn.), <i>Catocala</i> .....                   | 147,183,204,240           |
| <i>friesei</i> Svens., <i>Ocnerosstoma</i> .....                | 276,293                   |
| <i>fritchella</i> (Linn.), <i>Coleophora</i> .....              | 282                       |
| <i>froelichiella</i> (Zell.), <i>Phyllonorycter</i> .....       | 275                       |
| <i>fucosa</i> (Freyer), <i>Amphipoea</i> .....                  | 71                        |
| <i>fugitivella</i> (Zell.), <i>Carpatolechia</i> .....          | 281                       |
| <i>fuliginaria</i> (Linn.), <i>Parascotia</i> .....             | 5,72,182                  |
| <i>fuliginosa</i> (Linn.), <i>Phragmatobia</i> .....            | 47,110                    |
| <i>fulvalis</i> (Hüb.), <i>Udea</i> .....                       | 5,292                     |
| <i>fulvata</i> (Forst.), <i>Cidaria</i> .....                   | 47,104,244                |
| <i>fulviguttella</i> (Zell.), <i>Phaulernis</i> .....           | 285,294                   |
| <i>fulvimitrella</i> (Sodof.), <i>Triaxomera</i> .....          | 293                       |
| <i>fumidaria</i> (Hüb.), <i>Lignoptera</i> .....                | 22,26                     |
| <i>funebrana</i> (Treits.), <i>Grapholita</i> .....             | 290                       |
| <i>funesta</i> (Esp.), <i>Aedia</i> .....                       | 165,166,186               |
| <i>furcata</i> (Thunb.), <i>Hydriomena</i> .....                | 34,47,110                 |
| <i>furcifera</i> (Hufn.), <i>Lithophane</i> .....               | 5                         |
| <i>furcula</i> (Clerck), <i>Furcula</i> .....                   | 47,110                    |
| <i>furfurana</i> (Haw.), <i>Bactra</i> .....                    | 287                       |
| <i>furuncula</i> ([D.& S.]), <i>Mesoligia</i> .....             | 48,110                    |
| <i>fuscalis</i> ([D.& S.]), <i>Anania</i> .....                 | 292                       |
| <i>fuscantaria</i> (Haw.), <i>Ennomos</i> .....                 | 47,105                    |
| <i>fuscocuprella</i> H.-S., <i>Coleophora</i> .....             | 294                       |
| <i>fusconebulosa</i> (De Geer), <i>Phamarcis</i> .....          | 34,46                     |
| <i>fuscovenosa</i> (Goeze), <i>Idaea</i> .....                  | 46,105,114                |
| <i>galathea</i> (Linn.), <i>Melanargia</i> .....                | 33,89,103,232             |
| <i>galbanella</i> (Zell.), <i>Bryotropha</i> .....              | 279                       |
| <i>galata</i> ([D.& S.]), <i>Epirrhoe</i> .....                 | 36,42,47                  |
| <i>gallicana</i> (Guen.), <i>Pammene</i> .....                  | 148,290                   |
| <i>gallii</i> (Rott.), <i>Hyles</i> .....                       | 69,177,205                |
| <i>gamma</i> (Linn.), <i>Autographa</i> .....                   | 47,69,110,<br>126,198,226 |

|   |   |
|---|---|
| <b>GELECHIINAE</b> .....                                    | 2                                       |
| <b>GELECHIINI</b> .....                                     | 2                                       |
| <i>geniculea</i> (Haw.), <i>Agriphila</i> .....             | 293                                     |
| <i>geniculella</i> (Rag.), <i>Phyllonorycter</i> .....      | 275                                     |
| <i>genistella</i> (Dup.), <i>Pempelia</i> .....             | 291                                     |
| <i>genitalana</i> P& M., <i>Cnephasia</i> .....             | 4                                       |
| <i>gentianaeanana</i> (Hüb.), <i>Endothenia</i> .....       | 4,287,294                               |
| <i>geryon</i> (Hüb.), <i>Adscita</i> .....                  | 34,42,46                                |
| <i>gibbosella</i> (Zell.), <i>Psoricoptera</i> .....        | 280                                     |
| <i>gigantella</i> ([D.& S.]), <i>Schoenobius</i> .....      | 4,293                                   |
| <i>gilvata</i> (Fabr.), <i>Uresiphita</i> .....             | 174                                     |
| <i>gilvago</i> ([D.& S.]), <i>Cirrhia</i> .....             | 39,48                                   |
| <i>glareosa</i> (Esp.), <i>Eugnorisma</i> .....             | 104                                     |
| <i>glaucata</i> (Scop.), <i>Cilix</i> .....                 | 46,110                                  |
| <i>glaucinalis</i> (Linn.), <i>Hypsopygia</i> .....         | 291                                     |
| <i>Glaucolepis</i> Braun .....                              | 2                                       |
| <i>gleichenella</i> (Fabr.), <i>Elachista</i> .....         | 283                                     |
| <i>gluteosa</i> (Treits.), <i>Athetis</i> .....             | 29                                      |
| <i>glyphica</i> (Linn.), <i>Euclidia</i> .....              | 38,47,105,229                           |
| <i>gnoma</i> (Fabr.), <i>Pheosia</i> .....                  | 47,110                                  |
| <b>GNORIMOSCHEMINI</b> .....                                | 2                                       |
| <i>gonadactyla</i> ([D.& S.]), <i>Platyptilia</i> .....     | 284                                     |
| <i>gothica</i> (Linn.), <i>Orthosia</i> .....               | 40,48,110,126,<br>150,151 (photos), 237 |
| <i>gracilis</i> ([D.& S.]), <i>Orthosia</i> .....           | 39,48,108                               |
| <i>grandaevana</i> (Lien. & Zell.), <i>Epiblema</i> .....   | 288                                     |
| <i>grandella</i> (Zell.), <i>Hypsipyra</i> * .....          | 165,174                                 |
| <i>graminis</i> (Linn.), <i>Cerapteryx</i> .....            | 34,39,48,104                            |
| <i>grisealis</i> ([D.& S.]), <i>Herminia</i> .....          | 47,110                                  |
| <i>grisella</i> (Fabr.), <i>Achroia</i> .....               | 290                                     |
| <i>griseola</i> (Hüb.), <i>Eilema</i> .....                 | 72,110,244                              |
| <i>grossulariata</i> (Linn.), <i>Abraxas</i> .....          | 47,107                                  |
| <i>grotiana</i> (Fabr.), <i>Epagoge</i> .....               | 285                                     |
| <i>gryphipennella</i> (Hubn.), <i>Coleophora</i> .....      | 281                                     |
| <i>gysselelliella</i> Zell, <i>Cedistis</i> .....           | 3,276                                   |
| <i>harpagula</i> (Esp.), <i>Sabra</i> .....                 | 4                                       |
| <i>hastata recte halterata</i> (Hufn.), <i>Lobophora</i> .. | 102                                     |
| <i>haworthiata</i> Doubl., <i>Eupithecia</i> ..             | 37,47,106,113                           |
| <i>hecta</i> (Linn.), <i>Phymatopus</i> .....               | 106,114,245                             |
| <i>heindeli</i> Gaedike & Scholz, <i>Dryadaula</i> .....    | 74                                      |
| <i>hellerella</i> (Dup.), <i>Blastodacna</i> .....          | 283                                     |
| <i>helvola</i> (Linn.), <i>Agrochola</i> .....              | 106                                     |
| <i>hemerobiella</i> (Scop.), <i>Coleophora</i> .....        | 4                                       |
| <i>heringi</i> (Toll), <i>Ectoedemia</i> .....              | 271                                     |
| <i>hirtaria</i> (Clerck), <i>Lydia</i> .....                | 47,110,126                              |
| <i>hispidaria</i> ([D.& S.]), <i>Apocheima</i> .....        | 109                                     |
| <i>honoratella</i> (Rebel), <i>Caloptilia</i> .....         | 10 (photos),<br>217,267,273             |
| <i>horridella</i> (Treits.), <i>Ypsolopha</i> .....         | 276                                     |
| <i>hospes</i> (Freyer), <i>Athetis</i> .....                | 187                                     |
| <i>hostis</i> Triberti, <i>Phyllonorycter</i> .....         | 62,274                                  |
| <i>humidalis</i> Doubl., <i>Hyphenodes</i> .....            | 245                                     |
| <i>humili</i> (Linn.), <i>Hepialus</i> .....                | 34,46,106                               |
| <i>hybridella</i> (Hüb.), <i>Neocochylis</i> .....          | 286                                     |
| <i>hyperantus</i> (Linn.), <i>Aphantopus</i> .....          | 89,232                                  |
| <i>hyperici</i> ([D.& S.]), <i>Chloantha</i> ..             | 166,187,205,206                         |
| <i>icarus</i> (Rott.), <i>Polyommatus</i> .....             | 89,226                                  |
| <i>ichneumoniformis</i> ([D.& S.]), <i>Bembecia</i> .....   | 108                                     |

|  |                                  |
|--|----------------------------------|
| <i>icterata</i> (Vill.), <i>Eupithecia</i> .....             | 47                               |
| <i>icteritia</i> (Hufn.), <i>Cirrhia</i> .....               | 48,110                           |
| <i>idas</i> (Linn.), <i>Plebejus</i> .....                   | 93                               |
| <i>ignorata</i> Kuznetzov, <i>Pammene</i> .....              | 4                                |
| <i>imitaria</i> (Hüb.), <i>Scopula</i> .....                 | 46,71,110                        |
| <i>immaculatella</i> (Dougl.), <i>Oxypteryx</i> .....        | 280                              |
| <i>immorata</i> (Linn.), <i>Scopula</i> .....                | 166,179                          |
| <i>imundella</i> (Zell.), <i>Trifurcula</i> .....            | 147,270                          |
| <i>immutata</i> (Linn.), <i>Scopula</i> .....                | 36,46,107                        |
| <i>impluviata</i> ([D. & S.]), <i>Hydriomena</i> .....       | 107, 248<br>(as May Highflier)   |
| <i>impura</i> (Hüb.), <i>Mythimna</i> .....                  | 22,28 (photo), 29,<br>48,102,110 |
| <i>incanana</i> (Steph.), <i>Eana</i> .....                  | 286                              |
| <i>incarnatella</i> (Stuedel), <i>Rhigognostis</i> .....     | 276,293                          |
| <i>incerta</i> (Hufn.), <i>Orthosia</i> .....                | 40,48,110,126                    |
| <i>incertana</i> (Treits.), <i>Cnephasia</i> .....           | 286                              |
| <i>incognitella</i> (H.-S.), <i>Stigmella</i> .....          | 270                              |
| <i>inconspicuellata</i> (Staint.), <i>Dahlcia</i> .....      | 3                                |
| <i>indigata</i> (Hüb.), <i>Eupithecia</i> .....              | 107                              |
| <i>innoxiella</i> Gregersen & Karsholt, <i>Anarsia</i> ..... | 279                              |
| <i>inopinata</i> (Bigot & Picard), <i>Stenoptilia</i> .....  | 171                              |
| <i>inquinatana</i> ([D. & S.]), <i>Cydia</i> .....           | 289                              |
| <i>inscriptella</i> (Dup.), <i>Delplanqueia</i> .....        | 290,295                          |
| <i>insectella</i> (Fabr.), <i>Haplotinea</i> .....           | 307                              |
| <i>insecurella</i> (Staint.), <i>Epermenia</i> .....         | 285                              |
| <i>insignata</i> (Hüb.), <i>Eupithecia</i> .....             | 4                                |
| <i>inspersella</i> (Hüb.), <i>Scythris</i> .....             | 284                              |
| <i>insularia</i> (Guen.), <i>Pleuroprucha</i> *.....         | 165,17                           |
| <i>interjecta</i> (Hüb.), <i>Noctua</i> .....                | 48,110                           |
| <i>internana</i> (Guen.), <i>Grapholita</i> .....            | 289                              |
| <i>interpunctella</i> (Hüb.), <i>Plodia</i> .....            | 291                              |
| <i>interrogationis</i> (Linn.), <i>Syngrapha</i> .....       | 186                              |
| <i>interscindana</i> (Mösch.), <i>Cydia</i> 19 (photo),      | 72,289                           |
| <i>intimella</i> (Zell.), <i>Ectoedemia</i> .....            | 271                              |
| <i>inulæ</i> Wocke, <i>Coleophora</i> .....                  | 282                              |
| <i>io</i> (Linn.), <i>Aglais</i> .....                       | 89,226                           |
| <i>ipsilon</i> (Hufn.), <i>Agrotis</i> .....                 | 48,71,110,203                    |
| <i>iris</i> (Linn.), <i>Apatura</i> .....                    | 89                               |
| <i>irrorella</i> (Hüb.), <i>Yponomeuta</i> .....             | 275                              |
| <i>isodactylus</i> (Zell.), <i>Platyptilia</i> .....         | 284                              |
| <i>italica</i> Baldizzone, <i>Metalampra</i> .....           | 268,277                          |
| <i>jacobaeae</i> (Linn.), <i>Tyria</i> .....                 | 47,110,226                       |
| <i>janiszewskae</i> Riedl, <i>Sorhagenia</i> .....           | 279                              |
| <i>janthe</i> (Borkh.), <i>Noctua</i> .....                  | 48,110                           |
| <i>janthina</i> ([D. & S.]), <i>Noctua</i> .....             | 5                                |
| <i>joannisi</i> (Le Marchand), <i>Phyllonorycter</i> .....   | 75,<br>85,275                    |
| <i>josephinae</i> (Toll), <i>Agnoea</i> .....                | 278                              |
| <i>jota</i> (Linn.), <i>Autographa</i> .....                 | 47,110                           |
| <i>junctella</i> (Dougl.), <i>Caryocolum</i> .....           | 281                              |
| <i>juniperata</i> (Linn.), <i>Thera</i> .....                | 34,36,47                         |
| <i>junoniella</i> (Zell.), <i>Phyllonorycter</i> .....       | 293                              |
| <i>jurtina</i> (Linn.), <i>Maniola</i> .....                 | 89,226                           |
| <i>juventina</i> (Stoll), <i>Callopietria</i> .....          | 166,187                          |
| <i>kaekeritziana</i> (Linn.), <i>Agonopterix</i> .....       | 296                              |
| <i>kilmunella</i> Staint., <i>Elachista</i> .....            | 283                              |
| <i>klemannella</i> (Fabr.), <i>Phyllonorycter</i> .....      | 275                              |

|  |                      |
|--|----------------------|
| <i>kroesmanniella</i> (H.-S.), <i>Caryocolum</i> .....           | 281                  |
| <i>laburnella</i> (Staint.), <i>Leucoptera</i> .....             | 75,85                |
| <i>lacterinaria</i> (Linn.), <i>Falcaria</i> .....               | 46                   |
| <i>lactearia</i> Caradja, <i>Bactra</i> .....                    | 287                  |
| <i>lacteella</i> (Steph.), <i>Mompha</i> .....                   | 283                  |
| <i>laetana</i> (Fabr.), <i>Ancylis</i> .....                     | 287                  |
| <i>laetus</i> (Zell.), <i>Oxyptilus</i> .....                    | 171,294              |
| <i>laevigatella</i> H.-S., <i>Argyresthia</i> .....              | 276                  |
| <i>laevigella</i> ([D. & S.]), <i>Monopis</i> .....              | 273                  |
| <i>laichartingella</i> (Goeze), <i>Diplodoma</i> .....           | 272                  |
| <i>laisalis</i> (Walk.), <i>Sceliodes</i> .....                  | 175                  |
| <i>lanestris</i> (Linn.), <i>Eriogaster</i> .....                | 43,46,146            |
| <i>langiella</i> (Hüb.), <i>Mompha</i> .....                     | 283                  |
| <i>lantanelia</i> (Schrank), <i>Phyllonorycter</i> ...3,274,297  |                      |
| <i>lapidella</i> (Goeze), <i>Luffia</i> .....                    | 272                  |
| <i>lappella</i> (Linn.), <i>Metzneria</i> .....                  | 279                  |
| <i>laricana</i> (Hein), <i>Spilonota</i> .....                   | 287                  |
| <i>lariciata</i> (Freyer), <i>Eupithecia</i> .....               | 106,114              |
| <i>larseniella</i> Gozm., <i>Aproaerema</i> .....                | 279                  |
| <i>lassella</i> Stdgr., <i>Coleophora</i> .....                  | 4                    |
| <i>lateritia</i> (Hufn.), <i>Apamea</i> .....                    | 166,187              |
| <i>lathonia</i> (Linn.), <i>Issoria</i> .....                    | 173                  |
| <i>latreillei</i> (Dup.), <i>Callopietria</i> .....              | 168,187              |
| <i>latruncula</i> ([D. & S.]), <i>Oligia</i> .....               | 48                   |
| <i>laudeti</i> (Boisd.), <i>Hadena</i> .....                     | 28 (photo), 29       |
| <i>leautieri</i> (Boisd.), <i>Lithophane</i> .....               | 39,42,104            |
| <i>lecheana</i> (Linn.), <i>Ptycholoma</i> .....                 | 285                  |
| <i>legatella</i> ([D. & S.]), <i>Chesias</i> .....               | 37,44,47             |
| <i>lemniscella</i> (Zell.), <i>Stigmella</i> .....               | 296                  |
| <i>lentiginosella</i> (Zell.), <i>Mirificama</i> .....           | 3                    |
| <i>leplastriana</i> (Curtis), <i>Selania</i> .....               | 289                  |
| <i>leporina</i> (Linn.), <i>Acrionicta</i> .....                 | 47,107               |
| <i>leucapennella</i> (Steph.), <i>Povolnya</i> .....             | 274                  |
| <i>leucogaster</i> (Freyer), <i>Ochropleura</i> ...167,189,204   |                      |
| <i>leucographa</i> ([D. & S.]), <i>Cerastis</i> ...39,40,48,109, | 111,248              |
| <i>leucographella</i> (Zell.), <i>Phyllonorycter</i> .....       | 77,78,<br>83,296     |
| <i>leucographa</i> ([D. & S.]), <i>Cerastis</i> .....            | 165,190              |
| <i>leucophaearia</i> ([D. & S.]), <i>Agriopis</i> .....          | 110,113,<br>125,126  |
| <i>leucostigma</i> (Hüb.), <i>Helotropha</i> .....               | 28 (photo),<br>29,71 |
| <i>leucotreta</i> (Meyr.), <i>Thaumatotibia</i> ...172,289,297   |                      |
| <i>Levarchama</i> Beirne.....                                    | 2                    |
| <i>libatrix</i> (Linn.), <i>Scoliopteryx</i> .....               | 40,47,110            |
| <i>licarsisalis</i> (Walk.), <i>Herpetogramma</i> 167,168,176    |                      |
| <i>lichenaria</i> (Hufn.), <i>Cleorodes</i> .....                | 33,37,47             |
| <i>lichenella</i> (Linn.), <i>Dahlcia</i> .....                  | 272                  |
| <i>ligula</i> (Esp.), <i>Conistra</i> .....                      | 34,48,110            |
| <i>ligustri</i> ([D. & S.]), <i>Craniophora</i> .....            | 38,47,105            |
| <i>ligustri</i> (Linn.), <i>Sphinx</i> .....                     | 34,35,46             |
| <i>limbella</i> (Fabr.), <i>Scythris</i> .....                   | 284                  |
| <i>limbirena</i> (Guen.), <i>Ctenoplusia</i> ...5,167,168,185    |                      |
| <i>linearia</i> (Hüb.), <i>Cyclophora</i> .....                  | 36,46,105            |
| <i>lineola</i> (Ochs.), <i>Thymelicus</i> .....                  | 89,226               |
| <i>linneella</i> (Clerck), <i>Chrysoclista</i> .....             | 4                    |
| <i>literana</i> (Linn.), <i>Acleris</i> .....                    | 126,296              |

|  |                          |
|--|--------------------------|
| <i>literosa</i> (Haw.), <i>Litoligia</i> .....                           | 38,48,108                |
| <i>lithoxylaea</i> (D.& S.), <i>Apamea</i> .....                         | 48,110                   |
| LITINI .....   | 2                        |
| <i>littoralis</i> (Boisd.), <i>Spodoptera</i> .....                      | 205                      |
| <i>litura</i> (Linn.), <i>Agrochola</i> .....                            | 48,105                   |
| <i>liturata</i> (Clerck), <i>Macaria</i> .....                           | 110                      |
| <i>lividalis</i> (Hübner), <i>Hypena</i> .....                           | 168,180                  |
| <i>livornica</i> (Esp.), <i>Hyles</i> .....                              | 178,204,205              |
| <i>ljungiana</i> (Thunb.), <i>Argyrotaenia</i> .....                     | 285,295                  |
| <i>lobarzewskii</i> (Nowicki), <i>Grapholita</i> .....                   | 290                      |
| <i>lobella</i> (D.& S.), <i>Luquetia</i> .....                           | 278                      |
| <i>locupletella</i> (D.& S.), <i>Mompha</i> .....                        | 294                      |
| <i>loeflingiana</i> (Linn.), <i>Aleimma</i> .....                        |                          |
| <i>loganella</i> (Staint.), <i>Parornix</i> .....                        | 274                      |
| <i>logiana</i> (Clerck), <i>Acleris</i> .....                            | 4,286                    |
| <i>longana</i> (Haw.), <i>Cnephasia</i> .....                            | 286                      |
| <i>loniceriae</i> (Scheven), <i>Zygaena</i> .....                        | 34,45,46,<br>102,107,114 |
| <i>loreyi</i> (Dup.), <i>Leucania</i> .....                              | 165,202                  |
| <i>lota</i> (Clerck), <i>Agrochola</i> .....                             | 110                      |
| <i>lotella fo</i> (Hübner), <i>Anerastia</i> .....                       | 295                      |
| <i>louisella</i> (Sirc.), <i>Etainia</i> ( <i>Ectoedemia</i> ) .....     | 271                      |
| <i>lubricipeda</i> (Linn.), <i>Spilosoma</i> .....                       | 110                      |
| <i>lucens</i> (Frey.), <i>Amphiopoea</i> .....                           | 187                      |
| <i>lucida</i> (Hufn.), <i>Acontia</i> .....                              | 166,186                  |
| <i>lucina</i> (Linn.), <i>Hamearis</i> .....                             | 89                       |
| <i>lucipara</i> (Linn.), <i>Euplexia</i> .....                           | 48,110                   |
| <i>luctuosa</i> (D.& S.), <i>Tyta</i> .....                              | 38,47,186,225,226        |
| <i>lunaedactyla</i> (Haw.), <i>Marasmarcha</i> .....                     | 284                      |
| <i>lunaris</i> (D.& S.), <i>Minucia</i> .....                            | 166,184                  |
| <i>lunosa</i> (Haw.), <i>Omphaloscelis</i> .....                         | 48,110                   |
| <i>lunularia</i> (Hübner), <i>Selenia</i> .....                          | 37,41,47                 |
| <i>lupulinus</i> (Linn.), <i>Korscheltellus</i> .....                    | 46,110                   |
| <i>lurideola</i> (Zinck.), <i>Eilema</i> .....                           | 47,110                   |
| <i>lutea</i> (Linn.), <i>Spilosoma</i> .....                             | 47,110                   |
| <i>luteolata</i> (Linn.), <i>Opisthographis</i> .....                    | 47,110                   |
| <i>luteomella</i> Zell., <i>Elachista</i> .....                          | 297                      |
| <i>lutosa</i> (Hübner), <i>Rhizedra</i> .....                            | 106                      |
| <i>lutulenta</i> (D.& S.), <i>Aporophyla</i> .....                       | 5,39,48,105              |
| <i>lutulentella</i> (Zell.), <i>Monochroa</i> .....                      | 280                      |
| <i>lychnidis</i> (D.& S.), <i>Agrochola</i> .....                        | 48,104                   |
| <i>lychnitis</i> (Ramb.), <i>Shargacucullia</i> .....                    | 38,43,47                 |
| <i>machaon</i> (Linn.), <i>Papilio</i> .....                             | 88, 89,172,299           |
| subsp. <i>gorganus</i> (Fruhs.) .....                                    | 203                      |
| <i>macilenta</i> (Hübner), <i>Agrochola</i> .....                        | 48,110,126               |
| <i>maculicerusella</i> (Bruand), <i>Elachista</i> .....                  | 283                      |
| <i>maculosana</i> (Haw.), <i>Hysterophora</i> .....                      | 286                      |
| <i>maeiticaria</i> (Alphéraky), <i>Asovia</i> .....                      | 28                       |
| <i>maestingella</i> (Müll.), <i>Phyllonorycter</i> .....                 | 78,79                    |
| <i>malifoliella</i> (Costa), <i>Leucoperyx</i> .....                     | 78, 84 (photo)           |
| <i>malvae</i> (Linn.), <i>Pyrgus</i> .....                               | 89,227                   |
| <i>manniana</i> (F. v. R.), <i>Phalonia</i> .....                        | 286                      |
| <i>mansuetella</i> Zell., <i>Microperix</i> .....                        | 3                        |
| <i>margaritata</i> (Linn.), <i>Campaea</i> .....                         | 47,110                   |
| <i>margarotana</i> (Hein.), <i>Gravitarmata</i> .....                    | 172                      |
| <i>marginata</i> (Linn.), <i>Lomasipilis</i> .....                       | 47,110                   |
| <i>marginaria</i> (Fabr.), <i>Agriopis</i> .....                         | 47,110,126               |
| <i>maritima</i> (Tengst.), <i>Phycitodes</i> .....                       | 291,295                  |
| <i>maritimus</i> (Tausch.), <i>Chilodes</i><br>(as Silky Wainscot) ..... | 247                      |
| <i>marshalli</i> (Butler), <i>Cacyreus</i> .....                         | 173                      |
| <i>matura</i> (Hufn.), <i>Thalophila</i> .....                           | 48,71,110                |
| <i>maura</i> (Linn.), <i>Mormo</i> .....                                 | 38,48,107,111            |
| <i>medicaginella</i> (Gerasimov), <i>Phyllonorycter</i> .....            | 1                        |
| <i>megacephala</i> (D.& S.), <i>Subacronicta</i> .....                   | 47,110                   |
| <i>megea</i> (Linn.), <i>Lasiommatata</i> .....                          | 89,103,231               |
| <i>mendica</i> (Clerck), <i>Diaphora</i> .....                           | 47                       |
| <i>mendica</i> (Fabr.), <i>Diarsia</i> .....                             | 48,106                   |
| <i>mesomella</i> (Linn.), <i>Cybosia</i> .....                           | 106,245                  |
| <i>mespilella</i> (Hübner), <i>Phyllonorycter</i> .....                  | 62,274                   |
| <i>messaniella</i> (Zell.), <i>Phyllonorycter</i> .....                  | 78,79,274,296            |
| <i>metalella</i> (D.& S.), <i>Antispila</i> .....                        | 271                      |
| <i>metallica</i> (Poda), <i>Nemophora</i> .....                          | 3,272                    |
| <i>metaxella</i> (Hübner), <i>Nematopogon</i> .....                      | 272                      |
| <i>meticulosa</i> (Linn.), <i>Phlogophora</i> .....                      | 48,110,126               |
| <i>metzneriana</i> (Treits.), <i>Eucosma</i> .....                       | 148,288                  |
| <i>metzneriella</i> (Staint.), <i>Metzneria</i> .....                    | 279                      |
| <i>mi</i> (Clerck), <i>Callistege</i> .....                              | 38,47,107                |
| <i>micacea</i> (Esp.), <i>Hydraecia</i> .....                            | 110                      |
| <i>micalis</i> (Mann), <i>Tebenna</i> .....                              | 168,171,204,294          |
| <i>micana</i> (D.& S.), <i>Phiaris</i> .....                             | 287                      |
| <i>Micromelalopha</i> Nagano sp. ....                                    | 1                        |
| <i>microtheriella</i> (Staint.), <i>Stigmella</i> .....                  | 78,80                    |
| <i>millieridactyla</i> (Bruand), <i>Stenoptilia</i> .....                | 284                      |
| <i>milvipennis</i> Zell., <i>Coleophora</i> .....                        | 281                      |
| <i>miniata</i> (Forst.), <i>Miltochrista</i> .....                       | 38,47,108                |
| <i>minima</i> (Haw.), <i>Photedes</i> .....                              | 48,110,114               |
| <i>minimella</i> (D.& S.), <i>Nemophora</i> .....                        | 272                      |
| <i>minimus</i> (Fuessly), <i>Cupido</i> .....                            | 88,89                    |
| <i>miniosa</i> (D.& S.), <i>Orthosia</i> .....                           | 165,188                  |
| <i>minorata</i> (Treits.), <i>Perizoma</i> .....                         | 5                        |
| <i>minutana</i> (Hübner), <i>Gypsonoma</i> .....                         | 4,288                    |
| <i>minutella</i> (Linn.), <i>Borkhausenia</i> .....                      | 3,277                    |
| <i>Moitrelia</i> Leraut .....  | 2                        |
| <i>molesta</i> (Busck), <i>Grapholita</i> .....                          | 172,290                  |
| <i>molliculana</i> Zell., <i>Neocochylis</i> ( <i>Cochylis</i> ) .....   | 287                      |
| <i>monacha</i> (Linn.), <i>Lymantria</i> .....                           | 37,47,104,239,244        |
| <i>moneta</i> (Fabr.), <i>Polychrysis</i> .....                          | 38,47                    |
| <i>monodactyla</i> (Linn.), <i>Emmelina</i> .....                        | 126,285                  |
| <i>monoglypha</i> (Hufn.), <i>Apamea</i> .....                           | 48,110,126               |
| <i>montanana</i> (Dup.), <i>Dichrorampha</i> .....                       | 289                      |
| <i>montanata</i> (D.& S.), <i>Xanthorhoe</i> .....                       | 46,110                   |
| <i>morpheus</i> (Hufn.), <i>Caradrina</i> .....                          | 48,110                   |
| <i>mucronata</i> (Scop.), <i>Scotopteryx</i> .....                       | 44,46                    |
| <i>mucronella</i> (D.& S.), <i>Donocaula</i> .....                       | 293                      |
| <i>multistrigaria</i> (Haw.), <i>Colostygia</i> .....                    | 36,40,47,151             |
| <i>munda</i> (D.& S.), <i>Orthosia</i> .....                             | 39,48,109,126            |
| <i>mundana</i> (Linn.), <i>Nudaria</i> .....                             | 245                      |
| <i>muralis</i> (Forst.), <i>Nyctobrya</i> .....                          | 107                      |
| <i>murinata</i> (Scop.), <i>Minoa</i> .....                              | 36,44,47,102             |
| <i>muscerda</i> (Hufn.), <i>Pelosia</i> .....                            | 69,182                   |
| <i>muscosella</i> Zell., <i>Gelechia</i> .....                           | 280                      |
| <i>musculana</i> (Hübner), <i>Syndemis</i> .....                         | 285                      |
| <i>musculosa</i> (Hübner), <i>Oria</i> .....                             | 2                        |
| <i>mutilata</i> (Stdr), <i>Charissa</i> .....                            | 22,26,27 (photo)         |
| <i>nyllexerana</i> (Fabr.), <i>Prochoreutis</i> .....                    | 294                      |

|   |                    |
|---|--------------------|
| <i>myopaeformis</i> (Borkh.), <i>Synanthedon</i>          | 108                |
| <i>myrtiliana</i> (Treits.), <i>Ancylis</i>               | 287, 295           |
| <i>naevana</i> (Hübner.), <i>Rhopobota</i>                | 287                |
| <i>nana</i> (Haw.), <i>Thyralia</i> ( <i>Cochylis</i> )   | 286                |
| <i>nanana</i> (Treits.), <i>Epinotia</i>                  | 288                |
| <i>napi</i> (Linn.), <i>Pieris</i>                        | 89, 231            |
| <i>nebulata</i> (Scop.), <i>Euchoeca</i> (as Dingy Shell) | 248                |
| <i>nebulella</i> (Goeze), <i>Paraswammerdamia</i>         | 276                |
| <i>nebulosa</i> (Hufn.), <i>Polia</i>                     | 48, 106, 245       |
| <i>memoralis</i> (Scop.), <i>Agrotera</i>                 | 174, 292           |
| <i>Neocochylis</i> Razowski                               | 2                  |
| <i>Neotelphusa</i> Janse                                  | 2                  |
| <i>nerii</i> (Linn.), <i>Daphnis</i>                      | 167, 177           |
| <i>neustria</i> (Linn.), <i>Malacosoma</i>                | 35, 46, 106        |
| <i>ni</i> (Hübner.), <i>Trichoplusia</i>                  | 165, 166, 184      |
| <i>nicellii</i> (Staint.), <i>Phyllonorycter</i>          | 78, 80             |
| <i>nigra</i> (Haw.), <i>Aporophyla</i>                    | 39, 42, 48, 104    |
| <i>nigra</i> (Haw.), <i>Gelechia</i>                      | 3, 294             |
| <i>nigrata</i> (Scop.), <i>Pyrausta</i>                   | 292                |
| <i>nigricans</i> (Linn.), <i>Euxoa</i>                    | 39, 48             |
| <i>nigricomella</i> (Zell.), <i>Bucculatrix</i>           | 273                |
| <i>nigropunctata</i> (Hufn.), <i>Scopula</i>              | 179                |
| <i>nimbella</i> (Dup.), <i>Homoeosoma</i>                 | 160, 291           |
| <i>nitentella</i> (Fuchs), <i>Scrobipalpa</i>             | 280                |
| <i>nitidalis</i> (Walk.), <i>Musotima</i>                 | 293                |
| <i>noctuella</i> ([D. & S.]), <i>Nomophila</i>            | 69, 194            |
| <i>notana</i> (Don.), <i>Acleris</i>                      | 286                |
| <i>notata</i> (Linn.), <i>Macaria</i>                     | 71                 |
| <i>notha</i> (Hübner.), <i>Archiearis</i>                 | 4                  |
| <i>nubigera</i> ([D. & S.]), <i>Heliothis</i>             | 168, 186           |
| <i>nubilalis</i> (Hübner.), <i>Ostrinia</i>               | 174, 292           |
| <i>numeralis</i> (Hübner.), <i>Udea</i>                   | 53 (photo)         |
| <i>nupta</i> (Linn.), <i>Catocala</i>                     | 38, 47, 108        |
| <i>Nyctobrya</i> Boursin                                  | 2                  |
| <i>obductella</i> (Zell.), <i>Moitrelia</i>               | 290                |
| <i>obeliscata</i> (Hübner.), <i>Thera</i>                 | 47, 110            |
| <i>obliquella</i> (Hein.), <i>Stigmella</i>               | 270                |
| <i>obscurana</i> (Steph.), <i>Pammene</i>                 | 261, 290           |
| <i>obscuripennella</i> (Staint.), <i>Perittia</i>         | 283                |
| <i>obsitalis</i> (Hübner.), <i>Hypena</i>                 | 4, 204             |
| <i>obsoleta</i> (Hübner.), <i>Leucania</i>                | 245                |
| <i>obstipata</i> (Fabr.), <i>Nycterosia</i>               | 106, 168, 197      |
| <i>obtusa</i> (H.-S.), <i>Pelosia</i>                     | 182                |
| <i>obtusana</i> (Haw.), <i>Ancylis</i>                    | 287                |
| <i>obumbrotana</i> Lien. & Zell.), <i>Eucosma</i>         | 288                |
| <i>occidentis</i> Falkovitsh, <i>Lobesia</i>              | 4                  |
| <i>occulta</i> (Linn.), <i>Eurois</i>                     | 69, 190            |
| <i>ocellana</i> (Fabr.), <i>Agonopterix</i>               | 296                |
| <i>ocellaris</i> (Borkh.), <i>Cirrhia</i>                 | 5, 188             |
| <i>ocellata</i> (Linn.), <i>Cosmorhoe</i>                 | 47, 110            |
| <i>ocellata</i> (Linn.), <i>Smerinthus</i>                | 34, 46, 105        |
| <i>ocellatella</i> (Boyd), <i>Scrobipalpa</i>             | 149, 268, 280, 294 |
| <i>ocella</i> (Haw.), <i>Euchromius</i>                   | 4, 168, 176, 295   |
| <i>ochraceella</i> (Curtis), <i>Mompha</i>                | 294                |
| <i>ochroleuca</i> ([D. & S.]), <i>Eremobia</i>            | 42, 48, 110        |
| <i>ochsenheimerella</i> (Hübner.)*, <i>Nemophora</i>      | 264                |
| <i>ocnerostomella</i> (Staint.), <i>Tinagma</i>           | 148, 277           |
| <i>octogenaria</i> (Goeze), <i>Hoplodrina</i>             | 48, 110            |

|  |                              |
|--|------------------------------|
| <i>ocularis</i> (Linn.), <i>Tethea</i>                   | 46, 106                      |
| <i>oculea</i> (Linn.), <i>Amphipoea</i>                  | 48                           |
| <i>oehlmanniella</i> (Hübner.), <i>Incurvaria</i>        | 272                          |
| <i>ohridella</i> Deschka & Dimić, <i>Cameraria</i>       | 77, 80, 83, 267, 275         |
| <i>oleae</i> (Bernard), <i>Prays</i>                     | 170                          |
| <i>oleastrella</i> (Mill.), <i>Zelleria</i>              | 170, 275                     |
| <i>Olepa</i> Watson, 1980                                | 3                            |
| <i>oleracea</i> (Linn.), <i>Lacanobia</i>                | 48, 72, 110                  |
| <i>olivata</i> ([D. & S.]), <i>Colostygia</i>            | 36, 44, 47                   |
| <i>omoscopa</i> (Meyr.), <i>Opogona</i>                  | 273                          |
| <i>Oncocnemis</i> Hübner. sp.                            |                              |
| <i>ononaria</i> (Fuessly), <i>Aplasta</i>                | 180                          |
| <i>ophiogramma</i> (Esp.), <i>Laterologia</i>            | 72, 105                      |
| <i>oppressana</i> (Treits.), <i>Gypsonoma</i>            |                              |
| <b>OPOSTEGINAE</b>                                       | 2                            |
| <i>orana</i> (F. v. R.), <i>Adoxophyes</i>               | 285                          |
| <i>orbitella</i> Zell., <i>Coleophora</i>                | 281                          |
| <i>orbona</i> (Hufn.), <i>Noctua</i>                     | 48                           |
| <i>orichalcea</i> (Frey.), <i>Thysanoplusia</i>          | 167, 168, 185                |
| <i>orichalcea</i> Staint., <i>Cosmopterix</i>            | 3                            |
| <i>ornitopus</i> (Hufn.), <i>Lithophane</i>              | 39, 48, 106                  |
| <i>orstadii</i> Palm, <i>Elachista</i>                   | 9 (photo), 283               |
| <i>osseola</i> (Stdgr), <i>Hydraecia</i>                 | 12 (photos)                  |
| <i>ostrina</i> (Linn.), <i>Eublemma</i>                  | 167, 168, 182                |
| <i>oxyacanthae</i> (Frey), <i>Phyllonorycter</i>         | 62, 78, 79                   |
| <i>oxyacanthae</i> (Linn.), <i>Allophyes</i>             | 48, 110                      |
| <i>oxyacanthella</i> (Staint.), <i>Stigmella</i>         | 78, 79, 82                   |
| <i>pacatolana</i> (Zell.), <i>Cydia</i>                  | 289                          |
| <i>padella</i> (Lin.), <i>Yponomeuta</i>                 | 293                          |
| <i>paleacea</i> (Esp.), <i>Enargia</i>                   | 39, 42, 48, 188              |
| <i>pallens</i> (Linn.), <i>Mythimna</i>                  | 48, 110                      |
| <i>pallida</i> (Curtis), <i>Eudonia</i>                  | 292                          |
| <i>pallidata</i> (Hufn.), <i>Evergestis</i>              | 4, 292                       |
| <i>pallustris</i> (Hübner.), <i>Aethis</i>               | 58                           |
| <i>palpina</i> (Clerck), <i>Pterostoma</i>               | 47, 110                      |
| <i>paludella</i> (Hübner.), <i>Calamatropha</i>          | 292                          |
| <i>palumbella</i> ([D. & S.]), <i>Pempelia</i> (Hübner.) | 291                          |
| <i>palustrella</i> (Dougl.), <i>Monochroa</i>            | 3, 280                       |
| <i>pamphilus</i> (Linn.), <i>Coenonympha</i>             | 89, 226                      |
| <i>paphia</i> (Linn.), <i>Argynnis</i>                   | 89                           |
| <i>papilionaria</i> (Linn.), <i>Geometra</i>             | 47, 106                      |
| <i>paradoxa</i> (Frey), <i>Stigmella</i>                 | 270                          |
| <i>parenthesella</i> (Linn.), <i>Ypsolopha</i>           | 293                          |
| <i>pariana</i> (Clerck), <i>Choreutis</i>                | 285                          |
| <i>paripunctella</i> (Thunb.), <i>Pseudotelphusa</i>     | 281                          |
| <i>parthenias</i> (Linn.), <i>Archiearis</i>             | 34, 37, 47                   |
| <i>partita</i> Guen., <i>Galgula</i>                     | 5                            |
| <i>parva</i> (Hübner.), <i>Eublemma</i>                  | 165, 166, 167, 197, 204, 205 |
| <i>parvulana</i> (Wilkinson), <i>Eucosma</i>             | 288                          |
| <i>pastinum</i> (Treits.), <i>Lygephila</i>              | 38, 47, 104, 244             |
| <i>pastorella</i> (Zell.), <i>Phyllonorycter</i>         | 150, 275, 295                |
| <i>paupella</i> (Zell.), <i>Ptocheuusa</i>               | 280                          |
| <i>pauperana</i> (Dup.), <i>Phaneta</i>                  | 288                          |
| <i>pavonia</i> (Linn.), <i>Saturnia</i>                  | 226, 227                     |
| <i>pectinataria</i> (Knoch), <i>Colostygia</i>           | 47, 110                      |
| <i>pedella</i> (Linn.), <i>Stathmopoda</i>               | 4, 84, 294                   |

|   |              |
|---|--------------|
| <i>peltigera</i> (ID. & S.), <i>Heliolithis</i> .....   | 199,205      |
| <i>pennaria</i> (Linn.), <i>Colotois</i> .....  | 47,110       |
| <i>pennella</i> (ID. & S.), <i>Coleophora</i> .....   | 282          |
| <i>pentadactyla</i> (Linn.), <i>Pterophorus</i> .....   | 285,295      |
| <i>pertheri</i> (Rebel), <i>Charissa</i> .....  | 22           |
| <i>penziana</i> (Thunb.),<br><i>Eana f. bellana</i> Curtis 73 (photo)<br><i>peregrina</i> Agassiz, <i>Prays</i> ..... | 277          |
| <i>peribenanderi</i> Toll, <i>Coleophora</i> .....  | 282          |
| <i>Pericallia</i> Hübn. ....  | 3            |
| <i>perieresalis</i> (Walk.), <i>Diploseustis</i> .....  | 4,292        |
| <i>perulcidalis</i> (Hübner.), <i>Anania</i> .....  | 292,296      |
| <i>permutatellus</i> (H.-S.), <i>Catoptria</i> .....  | 176          |
| <i>perplexa</i> (ID. & S.), <i>Hadena</i> .....   | 48,110       |
| <i>perpygmaeella</i> (Doubl.), <i>Stigmella</i> .....   | 270          |
| <i>persicariae</i> (Linn.), <i>Melanchnra</i> .....   | 48,110       |
| <i>perspectalis</i> (Walk.), <i>Cydalima</i> .....  | 147,292      |
| <i>petiverella</i> (Linn.), <i>Dichrorampha</i> .....   | 289          |
| <i>phasianipennella</i> (Hübner.), <i>Calybites</i> .....   | 212          |
| <i>phlaesa</i> (Linn.), <i>Lycaena</i> .....  | 89,232       |
| <i>phoenicata</i> (Ramb.), <i>Eupithecia</i> .....  | 4            |
| <i>phragmitella</i> (Hübner.), <i>Chilo</i> .....   | 247          |
| <i>phragmitella</i> Staint., <i>Linnaecia</i> .....   | 278          |
| <i>phragmitidis</i> (Hübner.), <i>Arenostola</i> .....  | 5,105,245    |
| <i>picaepennis</i> (Haw.), <i>Scythris</i> .....  | 284          |
| <i>picarella</i> (Clerck), <i>Nemapogon</i> .....   | 5            |
| <i>pilosaria</i> (ID. & S.), <i>Phigalia</i> .....  | 110,125,126  |
| <i>pilosellae</i> (Zell.), <i>Oxyptilus</i> .....   | 285          |
| <i>pisantri</i> (Linn.), <i>Sphinx</i> .....  | 4,46,108,113 |
| <i>piniaria</i> (Linn.), <i>Bupalus</i> .....   | 37,44,47,104 |
| <i>piniariella</i> Zell., <i>Ocnerosstoma</i> .....   | 276          |
| <i>pinivorana</i> (Lien. & Zell.), <i>Rhyacionia</i> .....  | 289          |
| <i>pisi</i> (Linn.), <i>Ceramica</i> .....  | 48,72,110    |
| <i>pityocampa</i> (ID. & S.), <i>Thaumetopoea</i> ..  | 166,180      |
| <i>plagiata</i> (Linn.), <i>Aplocera</i> .....  | 47           |
| <i>plantaginis</i> (Linn.), <i>Parasemia</i> .....  | 33,37,47     |
| <i>platani</i> (Stdgr), <i>Phyllonorycter</i> .....   | 274          |
| <i>Platynota</i> Clemens.....   | 3            |
| <i>plebeja</i> (Linn.), <i>Hada</i> .....   | 45,48        |
| <i>plecta</i> (Linn.), <i>Ochroleura</i> .....  | 48,110       |
| <i>plexippus</i> (Linn.), <i>Danaus</i> .....   | 172          |
| <i>plumbana</i> (Scop.), <i>Dichrorampha</i> .....  | 289          |
| <i>plumbella</i> (ID. & S.), <i>Yponomeuta</i> .....  | 275          |
| <i>politella</i> (Staint.), <i>Bryotropha</i> .....   | 279          |
| <i>polychloros</i> (Linn.), <i>Nymphalis</i> .....  | 89,173       |
| <i>polychromella</i> (Rebel), <i>Approaerema</i> .....  | 3,171        |
| <i>polycommata</i> (ID. & S.), <i>Trichopteryx</i> .....  | 4,40         |
| <i>polygrammata</i> (Borkh.), <i>Costaconvexa</i> ..  | 165,179      |
| <i>polyodon</i> (Clerck), <i>Actinotia</i> .....  | 166,187      |
| <i>populetorum</i> (Zell.), <i>Caloptilia</i> .....   | 273          |
| <i>populeti</i> (Fabr.), <i>Orthosia</i> .....  | 106,111      |
| <i>populi</i> (Linn.), <i>Laothoe</i> .....   | 34,46,108    |
| <i>populi</i> (Linn.), <i>Poecilocampa</i> .....  | 46,110,126   |
| <i>porcellus</i> (Linn.), <i>Deilephila</i> .....   | 34,35,46,109 |
| <i>postvittana</i> (Walk.), <i>Epiphyas</i> .....   | 78,80,83,126 |
| <i>potentillae</i> Elisha, <i>Coleophora</i> .....  | 4            |
| <i>potentillella</i> Elisha, <i>Scythris</i> .....  | 148,284      |
| <i>poterii</i> (Staint.), <i>Stigmella</i> .....  | 270          |

|   |                           |
|---|---------------------------|
| <i>potatoria</i> (Linn.), <i>Euthrix</i> .....  | 46,110,245                |
| <i>praeangusta</i> (Haw.), <i>Batrachedra</i> .....                                   | 281                       |
| <i>praeformata</i> (Hübner.), <i>Aplocera</i> .....                                   | 4                         |
| <i>praelatella</i> (ID. & S.), <i>Incurvaria</i> .....                                | 272                       |
| <i>prasina</i> (ID. & S.), <i>Anaplectoides</i> .....                                 | 45,48,106,245             |
| <i>prasinana</i> (Linn.), <i>Pseudoips</i> .....                                      | 48,106                    |
| <i>primaria</i> (Haw.), <i>Thera</i> .....  | 47,110,125,126            |
| <i>proboscidalis</i> (Linn.), <i>Hypena</i> .....                                     | 47,110                    |
| <i>procellata</i> (ID. & S.), <i>Melanthia</i> .....                                  | 36,47,108                 |
| <i>processionea</i> (Linn.), <i>Thaumetopoea</i> .....                                | 147,180                   |
| <i>profundana</i> (ID. & S.), <i>Eudemis</i> .....                                    | 287                       |
| <i>promissa</i> (ID. & S.), <i>Catocala</i> .....                                     | 165,166                   |
| <i>prunuba</i> Linn., <i>Noctua</i> .....   | 41,48,110                 |
| <i>pronubana</i> (Hübner.), <i>Cacoecimorpha</i> .....                                | 285                       |
| <i>propinquella</i> (Staint.), <i>Mompha</i> .....                                    | 295                       |
| <i>proxima</i> (Haw.), <i>Caryocolum</i> .....  | 281                       |
| <i>pruinata</i> (Hufn.), <i>Pseudoterpna</i> .....                                    | 103,106                   |
| <i>prunaria</i> (Linn.), <i>Angerona</i> .....  | 4,102                     |
| <i>prunata</i> (Linn.), <i>Eulithis</i> .....   | 36,47,108                 |
| <i>pruni</i> (Linn.), <i>Satyrium</i> .....   | 96                        |
| <i>pruniella</i> (Clerck), <i>Argyresthia</i> .....                                   | 276,293                   |
| <i>prunifoliella</i> (Hübner.), <i>Lyonetia</i> .....                                 | 268, 277                  |
| <i>pseudocomplana</i> (Daniel), <i>Eilema</i> .....                                   | 110                       |
| <i>psi</i> (Linn.), <i>Acrionicta</i> .....   | 110                       |
| <b>PSYCHIDAE TYPHONINAE</b> .....   | 153,<br>155 (photos)      |
| <i>pubibunda</i> (Linn.), <i>Calliteara</i> .....                                     | 47,110                    |
| <i>pudorina</i> (ID. & S.), <i>Mythimna</i> .....                                     | 246                       |
| <i>pulchella</i> (Linn.), <i>Utetheisa</i> .....                                      | 167,168,181,205,206       |
| <i>pulchellata</i> Steph., <i>Eupithecia</i> .....                                    | 47                        |
| <i>pulcherrimella</i> Staint., <i>Depressaria</i> .....                               | 278                       |
| <i>pulchrimella</i> (Chambers), <i>Cosmopterix</i> .....                              | 278                       |
| <i>pulchrina</i> (Haw.), <i>Autographa</i> .....                                      | 38,47,104                 |
| <i>pulveralis</i> (Hübner.), <i>Psammotis</i> .....                                   | 166,174                   |
| <i>pumicana</i> (Zell.), <i>Cnephasia</i> .....                                       | 286,294                   |
| <i>punctaria</i> (Linn.), <i>Cyclophora</i> .....                                     | 107,245                   |
| <i>punctidatyla</i> (Haw.), <i>Amblyptilia</i> .....                                  | 284                       |
| <i>punctilinearia</i> (Leech), <i>Plesiomorpha</i> .....                              | 1                         |
| <i>punctinalis</i> (Scop.), <i>Hypomecis</i> .....                                    | 37,47,107                 |
| <i>punctulata</i> (ID. & S.), <i>Aethalura</i> .....                                  | 245                       |
| <i>pupillana</i> (Clerck), <i>Eucosma</i> .....                                       | 71,297                    |
| <i>pupillaria</i> (Hübner.), <i>Cyclophora</i> .....                                  | 4,179                     |
| <i>purdeyi</i> (Durr.), <i>Clavigesta</i> .....                                       | 297                       |
| <i>purpuralis</i> (Linn.), <i>Pyrausta</i> .....                                      | 291                       |
| <i>purpurina</i> (ID. & S.), <i>Eublemma</i> .....                                    | 5,147,165,<br>166,182,204 |
| <i>pusaria</i> (Linn.), <i>Cabera</i> .....   | 47,110                    |
| <i>pusillata</i> (ID. & S.), <i>Eupithecia</i> .....                                  | 32,34, 37,47              |
| <i>puta</i> (Hübner.), <i>Agrotis</i> .....   | 48,110                    |
| <i>putrescens</i> (Hübner.), <i>Leucania</i> .....                                    | 189                       |
| <i>putridaria</i> (H.-S.), <i>Catarhoe</i> .....                                      | 27 (photo),28             |
| <i>putridella</i> (ID. & S.), <i>Agonopterix</i> .....                                | 294                       |
| <i>putris</i> (Linn.), <i>Axylia</i> .....  | 48,110                    |
| <i>pygarga</i> (Hufn.), <i>Deltote</i> .....  | 38,47,245                 |
| <i>pygmaeana</i> (Hübner.), <i>Epinotia</i> .....                                     | 288                       |
| <i>pygmina</i> (Haw.), <i>Denticucullus</i> .....                                     | 109                       |
| <i>pygmina</i> (Haw.), <i>Denticucullus/fluxa</i> (Hübner.),<br><i>Photedes</i> ..... | 246                       |

|  |                       |   |                                |
|--|-----------------------|---|--------------------------------|
| <i>pyralina</i> (D. & S.), <i>Cosmia</i> .....                             | 110                   | <i>rufimitrella</i> (Scop.), <i>Cauchas</i> .....           | 272                            |
| <i>pyraliata</i> (D. & S.), <i>Gandaritis</i> .....                        | 47, 110               | <i>rumicis</i> (Linn.), <i>Acronicta</i> .....              | 110                            |
| <i>pyramidea</i> (Linn.), <i>Amphipyra</i> .....                           | 48, 110               | <i>ruricolella</i> (Staint.), <i>Nemopogon</i> .....        | 272                            |
| <i>pyritoides</i> (Hufn.), <i>Habrosyne</i> .....                          | 46                    | <i>sacraria</i> (Linn.), <i>Rhodometra</i> .....            | 71, 110, 165,<br>167, 168, 196 |
| <i>pyrina</i> (Linn.), <i>Zeuzera</i> .....                                | 34, 46, 107           | <i>sagitella</i> (Bjerk.), <i>Phyllonorycter</i> .....      | 275                            |
| <i>quadra</i> (Linn.), <i>Lithosia</i> .....                               | 72, 82                | <i>sakhalinella</i> (Puplesis), <i>Stigmella</i> .....      | 270                            |
| <i>quadrifasciata</i> (Clerck), <i>Xanthorhoe</i> .....                    | 36, 46, 106, 245      | <i>salicella</i> (Hübner), <i>Dasystoma</i> .....           | 293                            |
| <i>quadrillella</i> (Goeze), <i>Ethmia</i> .....                           | 278                   | <i>salicicolella</i> (Sirc.), <i>Phyllonorycter</i> .....   | 274                            |
| <i>quadrifasciata</i> (Haw.), <i>Endothenia</i> .....                      | 295                   | <i>salicis</i> (Linn.), <i>Leucoma</i> .....                | 71, 109                        |
| <i>quadrifasciata</i> (Boheman),<br><i>Bohemannia</i> .....                | 148, 271              | <i>salicorniae</i> Hein. & Wocke, <i>Coleophora</i> .....   | 282, 294                       |
| <i>quadrifasciata</i> (Poda), <i>Euplagia</i> .....                        | 4, 28, 146            | <i>saligna</i> (Zell.), <i>Phyllocnistis</i> .....          | 275                            |
| <i>quercana</i> (Fabr.), <i>Carcina</i> .....                              |                       | <i>salopiella</i> (Staint.), <i>Eriocranta</i> .....        | 3, 269, 293                    |
| <i>quercifolia</i> (D. & S.), <i>Gastropacha</i> .....                     | 34, 46                | <i>sambucaria</i> (Linn.), <i>Ourapteryx</i> .....          | 47, 110                        |
| <i>quercinaria</i> (Hufn.), <i>Ennomos</i> .....                           | 37, 47, 10            | <i>sanguinaria</i> (Duponchel, 1842)*, <i>Lythria</i> ..... | 210                            |
| <i>quercus</i> (Linn.), <i>Favonius</i> .....                              | 89                    | <i>sannio</i> (Linn.), <i>Diacrisia</i> .....               | 33, 37, 47                     |
| <i>quercus</i> (Linn.), <i>Lasiocampa</i> .....                            | 226                   | <i>santonici</i> (Hübner), <i>Cucullia</i> .....            | 29                             |
| <i>ramburalis</i> (Dup.), <i>Diasemiopsis</i> .....                        | 167, 168,<br>175, 205 | <i>saturatella</i> Staint., <i>Coleophora</i> .....         | 282                            |
| <i>ramella</i> (Linn.), <i>Epinotia</i> .....                              | 288                   | <i>satyrata</i> (Hübner), <i>Eupithecia</i> .....           | 47                             |
| <i>rapae</i> (Linn.), <i>Pteris</i> .....                                  | 89, 231               | <i>saucia</i> (Hübner), <i>Peridroma</i> .....              | 110, 202                       |
| <i>ratzeburgiana</i> (Saxesen), <i>Zeiraphera</i> .....                    | 295                   | <i>sauciana</i> (Fröl.), <i>Apotomis</i> .....              | 4, 287                         |
| <i>ravida</i> (D. & S.), <i>Spaelotis</i> .....                            | 109, 248              | <i>saxicola</i> (Vaughan), <i>Phycitodes</i> .....          | 291                            |
| (as Stout Dart)  |                       | <i>scabriuscula</i> (Linn.), <i>Dypterygia</i> .....        | 38, 48, 104, 244               |
| <i>recens</i> (Hübner), <i>Orgyia</i> .....                                | 239                   | <i>schalleriana</i> (Linn.), <i>Acleris</i> .....           | 126, 286                       |
| <i>rectangulata</i> (Linn.), <i>Pasiphila</i> .....                        | 47, 110               | <i>schleini</i> Witt et al. ....                            | 1                              |
| <i>recurvalis</i> (Fabr.), <i>Spoladea</i> .....                           | 168, 175, 205, 292    | <i>schmidtellus</i> (Heyd.), <i>Acompsia</i> .....          | 294                            |
| <i>remissa</i> (Hübner), <i>Apamea</i> .....                               | 48, 110               | <i>schoenicolella</i> Boyd, <i>Gylphipterix</i> .....       | 276                            |
| <i>repandaria</i> (Hufn.), <i>Epileone</i> .....                           | 37, 47, 104           | <i>schreibersiana</i> (Fröl.), <i>Phtheochroa</i> .....     | 286                            |
| <i>repandana</i> (Fabr.), <i>Acrobasis</i> .....                           | 291                   | <i>schulziana</i> (Fabr.), <i>Phiaris</i> .....             | 287                            |
| <i>repandata</i> (Linn.), <i>Alcis</i> .....                               | 47, 110               | <i>schwarzella</i> (Fabr.), <i>Pancalia</i> .....           | 278                            |
| <i>reticulata</i> (Goeze), <i>Sideridis</i> .....                          | 39, 48                | <i>scolopacina</i> (Esp.), <i>Apamea</i> .....              | 38, 48, 109                    |
| <i>revayana</i> (Scop.), <i>Nycteola</i> .....                             | 107                   | <i>scopariella</i> (Hein.), <i>Agonopterix</i> .....        | 3, 278                         |
| <i>rhamni</i> (Linn.), <i>Gonepteryx</i> .....                             | 89, 231               | <i>scotinella</i> H.-S., <i>Gelechia</i> .....              | 280                            |
| <i>rhododactyla</i> (D. & S.), <i>Cnaemidophorus</i> .....                 | 171                   | <i>scribaiella</i> Zell., <i>Cosmopterix</i> .....          | 278                            |
| <i>rhomboidea</i> (Hübner) sic.,<br><i>recte stigmatica</i> (Hübner) ..... | 48                    | <i>scribonia</i> (Stoll), <i>Hypercompe</i> .....           | 5                              |
| <i>rhomboidaria</i> (D. & S.), <i>Peribatodes</i> .....                    | 47, 110               | <i>scriptella</i> (Hübner), <i>Atlenia</i> .....            | 281                            |
| <i>ridens</i> (Fabr.), <i>Polyplocia</i> .....                             | 106                   | <i>scrophulariae</i> (D. & S.), <i>Shargacucullia</i> ..... | 186                            |
| <i>rivularis</i> (Fabr.), <i>Aneda</i> .....                               | 48, 105               | <i>secalis</i> (Linn.), <i>Mesapamea</i> .....              | 48, 110, 237                   |
| <i>rorrella</i> (Hübner), <i>Yponomeuta</i> .....                          | 275                   | <i>sedatana</i> Busck, <i>Dichrorampha</i> .....            | 289                            |
| <i>rostrana</i> (Walk.), <i>Platynota</i> .....                            | 5                     | <i>segetum</i> (D. & S.), <i>Agrotis</i> .....              | 48, 110                        |
| <i>rostralis</i> (Linn.), <i>Hypena</i> .....                              | 248                   | <i>selene</i> (D. & S.), <i>Boloria</i> .....               | 89                             |
| <i>rubi</i> (Linn.), <i>Callophrys</i> .....                               | 89                    | <i>semele</i> (Linn.), <i>Hipparchia</i> .....              | 89                             |
| <i>rubi</i> (Linn.), <i>Macrothylacia</i> .....                            | 34, 35, 46            | <i>semiargus</i> (Rott.), <i>Cyaniris</i> .....             | 88, 89                         |
| <i>rubi</i> (View.), <i>Diarsia</i> .....                                  | 48, 110               | <i>semibrunnea</i> (Haw.), <i>Lithophane</i> .....          | 102                            |
| <i>rubidata</i> (D. & S.), <i>Catarhoe</i> .....                           | 108                   | <i>semifasciana</i> (Haw.), <i>Apotomis</i> .....           | 287                            |
| <i>rubiginata</i> (Hufn.), <i>Scopula</i> .....                            | 204                   | <i>semifulvella</i> Haw., <i>Tinea</i> .....                | 272                            |
| <i>rubiginea</i> (D. & S.), <i>Conistra</i> .....                          | 39, 42, 48            | <i>semirubella</i> (Scop.), <i>Oncocera</i> .....           | 173, 291                       |
| <i>rubiginosa</i> (Scop.), <i>Conistra</i> .....                           | 65 (photos), 146      | <i>senectella</i> (Zell.), <i>Bryotropha</i> .....          | 279                            |
| <i>rubricollis</i> (Linn.), <i>Atolmis</i> .....                           | 38, 44, 47            | <i>senex</i> (Hübner), <i>Thumata</i> .....                 | 108, 245                       |
| <i>rubricosa</i> (D. & S.), <i>Cerastis</i> .....                          | 40, 48, 110, 150      | <i>senticetella</i> (Stdgr), <i>Gelechia</i> .....          | 280                            |
| <i>rufana</i> (Scop.), <i>Celypha</i> .....                                | 172                   | <i>septembrella</i> (Staint.), <i>Fomoria</i> .....         | 271, 293                       |
| <i>ruficeps</i> (Hein.), <i>Prays</i> .....                                | 3, 277                | <i>sequella</i> (Clerck), <i>Ypsolopha</i> .....            | 276                            |
| <i>ruficapitella</i> (Haw.), <i>Stigmella</i> .....                        | 296                   | <i>seriata</i> (Schrank), <i>Idaea</i> .....                | 46                             |
| <i>ruficiliaria</i> (H.-S.), <i>Cyclophora</i> .....                       | 179                   | <i>sericea</i> (Greg.), <i>Eilema</i> .....                 | 107                            |
| <i>ruficornis</i> (Hufn.), <i>Drymonia</i> .....                           | 47, 107, 111          | <i>sericealis</i> (Scop.), <i>Rivula</i> .....              | 47, 110                        |
| <i>rufifasciata</i> (Haw.), <i>Gymnoscelis</i> .....                       | 47                    | <i>sericiella</i> (Haw.), <i>Heliozela</i> .....            | 271                            |
|  |                       | <i>sericopeza</i> (Zell.), <i>Etainia</i> .....             | 271                            |
|  |                       | <i>serratella</i> (Linn.), <i>Coleophora</i> .....          | 77, 79                         |



|  |   |
|--|---|
| <i>sexalata</i> (Retz.), <i>Pterapherapteryx</i> .....         | 102,109                                       |
| <i>sexguttella</i> (Thunb.), <i>Chrysoesthia</i> .....         | 279   |
| <i>sexpunctella</i> (Fabr.), <i>Prolita</i> .....              | 280   |
| <i>sexstrigata</i> (Haw.), <i>Xestia</i> .....                 | 39,48,109                                     |
| <i>shepherdana</i> (Steph.), <i>Acleris</i> .....              | 4   |
| <i>signatana</i> (Dougl.), <i>Epinotia</i> .....               | 288   |
| <i>silaceata</i> ([D. & S.]), <i>Ecliptopera</i> .....         | 47,102, 110                                   |
| <i>similaria</i> (Hufn.), <i>Paectotropis</i> .....            | 104   |
| <i>similella</i> (Hübner.), <i>Denisia</i> .....               | 3   |
| <i>similella</i> (Zinck.), <i>Elegia</i> .....                 | 4, 290  |
| <i>similis</i> (Fuessly), <i>Euproctis</i> .....               | 47,71,110                                     |
| <i>simplicella</i> (Hein.), <i>Dioryctria</i> .....            | 291   |
| <i>simplicella</i> (La Harpe), <i>Udea</i> .....               | 53  |
| <i>simulans</i> (Hufn.), <i>Rhyacia</i> .....                  | 39,48,103,105,<br>190, 248 (as Dotted Rustic) |
| <i>sinapis</i> (Linn.), <i>Leptidea</i> .....                  | 89  |
| <i>sinuella</i> (Fabr.), <i>Homoeosoma</i> .....               | 291   |
| <i>siterata</i> (Hufn.), <i>Chlorochysta</i> .....             | 36,44,47, 110                                 |
| <i>sociana</i> (Haw.), <i>Gypsonoma</i> .....                  | 288   |
| <i>sorbi</i> (Frey), <i>Phyllonorycter</i> ...61,62 (photos)   | 274   |
| <i>sordens</i> (Hufn.), <i>Apamea</i> .....                    | 48,110  |
| <i>sororcula</i> (Hufn.), <i>Eilema</i> .....                  | 38,47,248                                     |
| <i>sororulella</i> (Hübner.), <i>Gelechia</i> .....            | 280   |
| <i>spadicearia</i> ([D. & S.]), <i>Xanthorhoe</i> .....        | 46,110  |
| <i>sparganella</i> (Thunb.), <i>Orthotelia</i> .....           | 276   |
| SPARGANOTHINI.....   | 2   |
| <i>Sparganthis</i> Hübner.....                                 | 2,3   |
| <i>sparmannella</i> (Bosc), <i>Eriocrania</i> .....            | 269   |
| <i>sparsana</i> ([D. & S.]), <i>Acleris</i> .....              | 142   |
| <i>sparsata</i> (Treits.), <i>Anticollix</i> .....             | 105,112                                       |
| <i>spartiella</i> (Schrank), <i>Anarsia</i> .....              | 294   |
| <i>sphinx</i> (Hufn.), <i>Asteroscopus</i> .....               | 38,48,110                                     |
| <i>splendana</i> (Hübner.), <i>Cydia</i> .....                 | 289   |
| <i>splendens</i> (Hübner.), <i>Lacanobia</i> .....             | 188   |
| <i>sponsa</i> (Linn.), <i>Catocala</i> .....                   | 69,165,166,183                                |
| <i>squamosella</i> Staint., <i>Coleophora</i> .....            | 282   |
| <i>stabilella</i> Staint., <i>Elachista</i> .....              | 283   |
| <i>stagnana</i> ([D. & S.]), <i>Rhopobota</i> .....            | 287   |
| <i>statices</i> (Linn.), <i>Adscita</i> .....                  | 34,35,46,102                                  |
| <i>steinkellneriana</i> ([D. & S.]), <i>Semioscopis</i> .....  | 278   |
| <i>stellatarum</i> (Linn.), <i>Macroglossum</i> .....          | 34,46,71,194                                  |
| <i>stephensi</i> (Staint.), <i>Dystebenna</i> .....            | 283   |
| <i>sternipennella</i> (Zett.), <i>Coleophora</i> .....         | 282   |
| <i>steropodes</i> Meyr., <i>Pachyrhabda</i> .....              | 4,268,284                                     |
| <i>sticticalis</i> (Linn.), <i>Loxostege</i> .....             | 4,174,204                                     |
| <i>stigmatica</i> (Hübner.), <i>Xestia</i> .....               | 39,41,109                                     |
| <i>stix</i> H.-S., <i>Amphipyra</i> .....                      | 27 (photo),29                                 |
| <i>stolida</i> (Fabr.), <i>Grammodes</i> .....                 | 184   |
| <i>straminata</i> (Borkh.), <i>Idaea</i> .....                 | 108,114                                       |
| <i>straminea</i> (Treits.), <i>Mythimna</i> .....              | 29,109,246                                    |
| <i>strataria</i> (Hufn.), <i>Biston</i> .....                  | 47,110,126                                    |
| <i>striata</i> (Linn.), <i>Coscinia</i> .....                  | 5   |
| <i>strigana</i> (Fabr.), <i>Lathronympha</i> .....             | 289   |
| <i>strigilis</i> (Linn.), <i>Oligia</i> .....                  | 110   |
| <i>strigilata</i> (Linn.), <i>Pechipogo</i> .....              | 5   |
| <i>strigula</i> ([D. & S.]), <i>Meganola</i> .....             | 5,109,112                                     |
| <i>strigulatella</i> (Lien. & Zell), <i>Phyllonorycter</i> ... | 275   |
| <i>striolella</i> (Matsumura), <i>Niditinea</i> .....          | 3,273   |

|  |                |
|--|----------------|
| <i>strobilella</i> (Linn.), <i>Cydia</i> .....           | 172            |
| <i>stultana</i> Wals., <i>Platynota</i> .....            | 1, 171         |
| <i>suasa</i> ([D. & S.]), <i>Lacanobia</i> .....         | 39,48          |
| <i>subalbidella</i> Schläger, <i>Elachista</i> .....     | 283            |
| <i>subaquilela</i> (Staint.), <i>Denisa</i> .....        | 121,277        |
| <i>subarcuana</i> (Dougl.), <i>Ancylys</i> .....         | 287            |
| <i>subbimaculella</i> (Haw.), <i>Ectoedemia</i> .....    | 271            |
| <i>subbistrigella</i> (Haw.), <i>Mompha</i> .....        | 283            |
| <i>subcinctella</i> (Bruand), <i>Scythris</i> .....      | 284            |
| <i>subcinerea</i> (Haw.), <i>Platyedra</i> .....         | 279            |
| <i>suberivora</i> (Staint.), <i>Stigmella</i> .....      | 270            |
| <i>subfasciella</i> (Steph.), <i>Cedestis</i> .....      | 276            |
| <i>subfuscata</i> (Haw.), <i>Eupithecia</i> .....        | 47             |
| <i>sublustris</i> (Esp.), <i>Apamea</i> .....            | 38,48,108      |
| <i>subocellea</i> (Steph.), <i>Elachista</i> .....       | 283            |
| <i>subocellea</i> (Steph.), <i>Thiotricha</i> .....      | 279            |
| <i>subtusa</i> ([D. & S.]), <i>Ipimorpha</i> .....       | 107            |
| <i>subumbrata</i> ([D. & S.]), <i>Eupithecia</i> .....   | 37,47          |
| <i>succenturiata</i> (Linn.), <i>Eupithecia</i> .....    | 37,47,104      |
| <i>suffumata</i> ([D. & S.]), <i>Lampropteryx</i> .....  | 36,47,109      |
| <i>suffusella</i> (Dougl.), <i>Monochroa</i> .....       | 294            |
| <i>suspectana</i> (Lien. & Zell.), <i>Pammene</i> .....  | 290            |
| <i>sylvanus</i> (Esp.), <i>Ochlodes</i> .....            | 89,226         |
| <i>sylvata</i> (Scop.), <i>Abraxas</i> .....             | 37,47,179      |
| <i>sylvestrella</i> (Ratz.), <i>Dioryctria</i> .....     | 173            |
| <i>sylvestris</i> (Poda), <i>Thymelicus</i> .....        | 89,226         |
| <i>sylvicolana</i> (Hein.), <i>Dichrorampha</i> .....    | 4,289          |
| <i>sylvina</i> (Linn.), <i>Triodia</i> .....             | 46,110         |
| <i>syringaria</i> (Linn.), <i>Apeira</i> .....           | 37,44,47,107   |
| <i>taenialis</i> (Hübner.), <i>Schrankia</i> .....       | 248            |
| <i>taeniata</i> (Steph.), <i>Martania</i> .....          | 47             |
| <i>taeniipennella</i> H.-S., <i>Coleophora</i> .....     | 282            |
| <i>tages</i> (Linn.), <i>Erynnis</i> .....               | 89             |
| <i>tamesis</i> Waters, <i>Coleophora</i> .....           | 282            |
| <i>tantillaria</i> Boisid., <i>Eupithecia</i> .....      | 105,114        |
| <i>tapetzella</i> (Linn.), <i>Trichophaga</i> .....      | 272            |
| <i>tarsipennalis</i> (Treits.), <i>Hermintia</i> .....   | 47,110         |
| <i>taurella</i> ([D. & S.]), <i>Ochsenheimeria</i> ..... | 276            |
| <i>temerata</i> ([D. & S.]), <i>Lomographa</i> .....     | 47,110         |
| <i>templi</i> (Thunb.), <i>Dasyptolia</i> .....          | 29             |
| <i>tenebrata</i> (Scop.), <i>Panemeria</i> .....         | 38,44,47       |
| <i>tenebrosana</i> (Dup.), <i>Grapholita</i> .....       | 290            |
| <i>tenuiata</i> (Hübner.), <i>Eupithecia</i> .....       | 110            |
| <i>terebrella</i> (Zinck.), <i>Assara</i> .....          | 174,291        |
| <i>terminella</i> (Hump & Westw.), <i>Mompha</i> .....   | 284            |
| <i>tersata</i> ([D. & S.]), <i>Horisme</i> .....         | 36,44,47,106   |
| <i>tessularia</i> (Metzner), <i>Narraga</i> .....        | 26,27 (photo)  |
| <i>tessellum</i> (Hübner.), <i>Muschampia</i> .....      | 22             |
| <i>testacea</i> ([D. & S.]), <i>Luperina</i> .....       | 29,48,110      |
| <i>testata</i> (Linn.), <i>Lygris</i> .....              | 105,244        |
| <i>tetra</i> (Fabr.), <i>Amphipyra</i> .....             | 29             |
| <i>tetragonana</i> (Steph.), <i>Notocelia</i> .....      | 288            |
| <i>tetralunaria</i> (Hufn.), <i>Selenia</i> .....        | 47,110         |
| <i>thalassina</i> (Hufn.), <i>Lacanobia</i> .....        | 48,110         |
| <i>thoracella</i> (Thunb.), <i>Bucculatrix</i> .....     | 273            |
| <i>thrips</i> (Hübner.), <i>Paracossulus</i> .....       | 22, 25 (photo) |
| <i>Thyralia</i> Wals.....                                | 2              |
| <i>tiliae</i> (Frey), <i>Stigmella</i> .....             | 269            |

|  |                |  |                   |
|--|----------------|--|-------------------|
| <i>tiliae</i> (Linn.), <i>Mimas</i> .....                  | 107            | <i>unipuncta</i> (Haw.), <i>Mythimna</i> .....                         | 201               |
| <i>tinctella</i> (Hübner), <i>Crassa</i> .....             | 277            | <i>unitana</i> (Hübner), <i>Zelotheresa</i> .....                      | 285               |
| <i>tirhaca</i> (Cramer)*, <i>Ophiusa</i> .....             | 165,184        | <i>urticae</i> (Esp.), <i>Spilosoma</i> .....                          | 4                 |
| <i>tinonius</i> (Linn.), <i>Pyronia</i> .....              | 89,226         | <i>urticae</i> (Linn.), <i>Aglais</i> .....                            | 88,89,226         |
| <i>tityrella</i> (Staint.), <i>Stigmella</i> .....         | 78,79          | ab. <i>conjuncta</i> Neuberger.....                                    | 241 (photos)      |
| <i>togata</i> (Esp.), <i>Xanthia</i> .....                 | 48,110         | <i>ustalella</i> (Fabr.), <i>Anarsia</i> .....                         | 279               |
| <i>torquilella</i> (Zell.), <i>Parornix</i> .....          | 296            | <i>ustomaculana</i> (Curtis), <i>Rhopobota</i> .....                   | 295               |
| <i>tragopoginis</i> (Clerck), <i>Amphipyra</i> .....       | 48,110         | <i>utonella</i> Frey, <i>Elachista</i> .....                           | 294               |
| <i>transversa</i> (Hufn.), <i>Eupsilia</i> .....           | 48,110,126     | <i>v-ata</i> (Haw.), <i>Chloroclystis</i> .....                        | 47,110            |
| <i>transversata</i> (Hufn.), <i>Philereme</i> .....        | 36,47,105      | <i>vaccinii</i> (Linn.), <i>Conistra</i> .....                         | 34,48,110,126     |
| <i>trapezina</i> (Linn.), <i>Cosmia</i> .....              | 48,72,110      | <i>vancouverana</i> McDunnough, <i>Dichrorampha</i> .....              | 289               |
| <i>tremula</i> (Clerck), <i>Pheosia</i> .....              | 47,110         | <i>vapidella</i> (Mann)*, <i>Euzopherodes</i> .....                    | 257               |
| <i>triangulum</i> (Hufn.), <i>Xestia</i> .....             | 48,110         | <i>venata</i> (Bremer & Grey), <i>Ochlodes</i> .....                   | .....             |
| <i>triatomea</i> (Haw.), <i>Elachista</i> .....            | 283            | <i>venosata</i> (Fabr.), <i>Eupithecia</i> .....                       | 37,44,47,107      |
| <i>tridens</i> /psi, <i>Acrionicta</i> .....               | 47             | <i>verbasci</i> (Linn.), <i>Shargacucullia</i> .....                   | 110               |
| <i>tricolorella</i> (Haw.), <i>Caryocolum</i> .....        | 4,281          | <i>verellus</i> (Zinck.), <i>Catoptria</i> .....                       | 165,176,204       |
| <i>trifasciata</i> Stdgr, <i>Argyresthia</i> .....         | 276            | <i>verhuella</i> Bruand, <i>Psychoides</i> .....                       | 273               |
| <i>trifasciella</i> (Haw.), <i>Phyllonorycter</i> .....    | 275            | <i>versicolor</i> (Borkh.), <i>Oligia</i> .....                        | 48                |
| <i>trifolii</i> (Hufn.), <i>Anarta</i> .....               | 72,110         | <i>verticalis</i> (Linn.), <i>Sitochroa</i> .....                      | 292               |
| <i>trifolii</i> (Esp.), <i>Zygaena</i> .....               | 34,44,46,114   | <i>vespiformis</i> (Linn.), <i>Synanthedon</i> .....                   | 109               |
| <i>Trifurcula</i> Zell.....                                | 2              | <i>vestigialis</i> (Hufn.), <i>Agrotis</i> .....                       | 102,104,244       |
| <i>trigeminata</i> (Haw.), <i>Idaea</i> .....              | 34,46          | <i>vetulata</i> ([D. & S.]), <i>Philereme</i> .....                    | 36,47,105,244     |
| <i>trigrammica</i> (Hufn.), <i>Charanyca</i> .....         | 48,110         | <i>vetusta</i> (Hübner), <i>Xylota</i> .....                           | 188               |
| <i>trimaculella</i> (Haw.), <i>Stigmella</i> .....         | 78,80          | <i>viminalis</i> (Fabr.), <i>Brachylochia</i> .....                    | 110               |
| <i>trifasciata</i> (Hufn.), <i>Abrostola</i> .....         | 47,110         | <i>viminetorum</i> (Staint.), <i>Phyllonorycter</i> .....              | 3                 |
| <i>triplasia</i> (Linn.), <i>Abrostola</i> .....           | 47,105,114     | <i>viminiella</i> (Sirc.), <i>Phyllonorycter</i> .....                 | 274               |
| <i>tripunctaria</i> H.-S., <i>Eupithecia</i> .....         | 37,47,109      | <i>vinella</i> (Bankes), <i>Approaerema</i> ( <i>Syncopacma</i> )..... | .....             |
| <i>tristrigella</i> (Haw.), <i>Phyllonorycter</i> .....    | 293,296        | <i>vinula</i> (Linn.), <i>Cerura</i> .....                             | 47,110,245        |
| <i>tritici</i> (Linn.), <i>Euxoa</i> .....                 | 5              | <i>violacea</i> (Ström), <i>Coleophora</i> .....                       | 281               |
| <i>tritophus</i> ([D. & S.]), <i>Notodonta</i> .....       | 166,180        | <i>viretata</i> (Hübner), <i>acasis</i> .....                          | 37,47,109         |
| <i>trochilella</i> (Dup.), <i>Coleophora</i> .....         | 282            | <i>virgata</i> (Hufn.), <i>Phibalapteryx</i> .....                     | 28                |
| <i>truncata</i> (Hufn.), <i>Chloroclysta</i> .....         | 47, 110        | <i>virgaureae</i> Staint., <i>Coleophora</i> .....                     | 294               |
| <i>trux</i> (Hübner), <i>Agrotis</i> .....                 | 189            | <i>viridana</i> (Linn.), <i>Tortrix</i> .....                          | 295               |
| <i>tumidana</i> ([D. & S.]), <i>Acrobasis</i> .....        | 174            | <i>viridata</i> (Clerck), <i>Chlorissa</i> .....                       | 37,44,47          |
| <i>turbidana</i> Hübner, <i>Apotomis</i> .....             | 288            | <i>viridaria</i> (Clerck), <i>Phytometra</i> .....                     | 38,47             |
| <i>turionella</i> (Linn.), <i>Pseudocoocyx</i> .....       | 4,288          | <i>viriplaca</i> (Hufn.), <i>Heliothis</i> .....                       | 69                |
| <i>typica</i> (Linn.), <i>Naenia</i> .....                 | 48,106         | <i>viscariella</i> (Staint.), <i>Caryocolum</i> .....                  | 281               |
| <i>uddmanniana</i> (Linn.), <i>Notocelia</i> .....         | 288            | <i>viscerella</i> (Staint.), <i>Stigmella</i> .....                    | 270               |
| <i>ulicicolella</i> (Staint.), <i>Phyllonorycter</i> ..... | 274            | <i>vitalbata</i> ([D. & S.]), <i>Horisme</i> .....                     | 36,47,102,109,111 |
| <i>uliginosellus</i> Zell., <i>Crambus</i> .....           | 292            | <i>vitellina</i> (Hübner), <i>Mythimna</i> .....                       | 166,200           |
| <i>ulmella</i> Zell., <i>Bucculatrix</i> .....             | 273,296        | <i>vitrealis</i> (Rossi), <i>Palpita</i> .....                         | 168,193,204       |
| <i>ulmifoliae</i> Hering, <i>Bucculatrix</i> .....         | 17 (photo),273 | <i>vittata</i> (Borkh.), <i>Orthonama</i> .....                        | 107,245           |
| <i>ulmifoliella</i> (Hübner), <i>Phyllonorycter</i> .....  | 78,79,82       | <i>vittata</i> (Woll.), <i>Blastobasis</i> .....                       | 284               |
| <i>ultima</i> Staint., <i>Depressaria</i> .....            | 278            | <i>vittella</i> (Fabr.), <i>Earias</i> .....                           | 190               |
| <i>umbellana</i> (Fabr.), <i>Agonopterix</i> .....         | 278            | <i>vulgana</i> (Fröl.), <i>Capua</i> .....                             | 285               |
| <i>umbra</i> (Hufn.), <i>Pyrrhia</i> .....                 | 48             | <i>vulgata</i> (Haw.), <i>Eupithecia</i> .....                         | 34,47,110         |
| <i>umbrana</i> (Hübner), <i>Acleris</i> .....              | 286            | <i>vulgella</i> ([D. & S.]), <i>Teleiodes</i> .....                    | 28                |
| <i>umbratica</i> (Linn.), <i>Cucullia</i> .....            | 47,110         | <i>w-album</i> (Knoch), <i>Satyrium</i> .....                          | 89                |
| <i>unangulata</i> (Haw.), <i>Euphyia</i> .....             | 4, 36,44       | <i>wauaria</i> (Linn.), <i>Macaria</i> .....                           | 179               |
| <i>unanimis</i> (Hübner), <i>Apamea</i> .....              | 38,48          | <i>weirana</i> (Dougl.), <i>Strophedra</i> .....                       | 290               |
| <i>Uncinus</i> Amsel.....                                  | 2              | <i>w-latinum</i> (Hufn.), <i>Lacanobia</i> .....                       | 39,48,107         |
| <i>uncula</i> (Clerck), <i>Deltote</i> .....               | 101,108        | <i>woodiella</i> Richards & Thomson, <i>Ephesia</i> .....              | 291               |
| <i>undalis</i> (Fabr.), <i>Hellula</i> .....               | 167,176        | <i>xanthographa</i> ([D. & S.]), <i>Xestia</i> .....                   | 41,48,110         |
| <i>undulata</i> (Linn.), <i>Hydria</i> .....               | 108            | <i>xanthomista</i> (Hübner), <i>Polymixis</i> .....                    | 121               |
| <i>unguicella</i> (Linn.), <i>Ancylis</i> .....            | 287            | <i>xenia</i> Hering, <i>Phyllocnistis</i> .....                        | 295               |
| <i>unicolorella</i> (Dup.), <i>Oxypteryx</i> .....         | 280            | <i>xylostella</i> (Linn.), <i>Plutella</i> .....                       | 69,126,191        |
| <i>unicolorella</i> (Stdgr), <i>Ephesia</i> .....          | 257            | <i>yeatiana</i> (Fabr.), <i>Agonopterix</i> .....                      | 278               |
| <i>unimaculella</i> (Zett.), <i>Eriocrania</i> .....       | 269            | <i>ypsillon</i> ([D. & S.]), <i>Apterogenum</i> .....                  | 105               |

|  |                            |
|--|----------------------------|
| <i>Zimmermannia</i> Hering.....                    | 2                          |
| <i>zinckenella</i> (Treits.), <i>Etiella</i> ..... | 69,166,168,<br>173,290,296 |

#### ACARI

|  |       |
|--|-------|
| <i>malinus</i> (Nalepa), <i>Phyllocoptes</i> ..... | 77,78 |
|--|-------|

|                |             |
|----------------|-------------|
| ORIBATIDA..... | 157 (photo) |
|----------------|-------------|

|                  |             |
|------------------|-------------|
| PROSTIGMATA..... | 157 (photo) |
|------------------|-------------|

|                    |             |
|--------------------|-------------|
| TROMBIDIOIDEA..... | 157 (photo) |
|--------------------|-------------|

#### COLEOPTERA

|  |    |
|--|----|
| <i>alni</i> (Linn.), <i>Agelastica</i> ..... | 75 |
|--|----|

|  |             |
|--|-------------|
| <i>axyridis</i> (Pall.), <i>Harmonia</i> ..... | 77,79,80,82 |
|--|-------------|

|  |             |
|--|-------------|
| <i>bipunctata</i> (Linn.), <i>Adalia</i> ..... | 77,79,80,82 |
|--|-------------|

|  |    |
|--|----|
| <i>ocellata</i> (Linn.), <i>Anatis</i> ..... | 72 |
|--|----|

|  |       |
|--|-------|
| <i>pulicarius</i> (Herbst), <i>Ramphus</i> ..... | 77,79 |
|--|-------|

|  |          |
|--|----------|
| <i>viburni</i> (Paykull), <i>Pyrrhalta</i> ..... | 77,80,83 |
|--|----------|

#### DIPTERA

|                                       |             |
|---------------------------------------|-------------|
| <i>Culicomorpha</i> Hennig, 1948..... | 156 (photo) |
|---------------------------------------|-------------|

|                     |             |
|---------------------|-------------|
| DOLICHOPODIDAE..... | 156 (photo) |
|---------------------|-------------|

|  |       |
|--|-------|
| <i>ilicis</i> (Curtis), <i>Phytomyza</i> ..... | 77,80 |
|--|-------|

|   |              |
|---|--------------|
| <i>luteoscutellata</i> (de Meijere), <i>Aulagromyza</i> ..... | 77,<br>80,83 |
|---|--------------|

|                     |             |
|---------------------|-------------|
| MYCETOPHILIDAE..... | 156 (photo) |
|---------------------|-------------|

|                                      |             |
|--------------------------------------|-------------|
| <i>Rhamphomyia</i> Meigen, 1822..... | 156 (photo) |
|--------------------------------------|-------------|

|  |             |
|--|-------------|
| <i>rubra</i> (Kieffer), <i>Massalongia</i> ..... | 77,80,82,83 |
|--|-------------|

|                |             |
|----------------|-------------|
| SCARIIDAE..... | 156 (photo) |
|----------------|-------------|

|                              |          |
|------------------------------|----------|
| <i>Syrphus</i> Fabr. sp..... | 77,79,82 |
|------------------------------|----------|

#### HEMIPTERA

|   |          |
|---|----------|
| <i>alacris</i> Flor, <i>Lauritrioza</i> ..... | 77,78,83 |
|---|----------|

|   |          |
|---|----------|
| <i>cerasi</i> (Fabr.), <i>Myzus</i> ..... | 77,78,82 |
|---|----------|

|   |             |
|---|-------------|
| <i>falcatus</i> (Cyrillus), <i>Ventocoris</i> ..... | 21 (photos) |
|---|-------------|

|  |    |
|--|----|
| <i>ferus</i> (Linn.), <i>Nabis</i> ..... | 72 |
|--|----|

|  |          |
|--|----------|
| <i>rufipes</i> (Linn.), <i>Pentatoma</i> ..... | 77,79,82 |
|--|----------|

|   |    |
|---|----|
| <i>wagneri</i> Remane, <i>Lygus</i> ..... | 72 |
|---|----|

#### HYMENOPTERA

|   |    |
|---|----|
| <i>alienus</i> Förster, <i>Lasius</i> ..... | 93 |
|---|----|

|   |       |
|---|-------|
| <i>appendiculata</i> (Hartig), <i>Pristophora</i> ..... | 78,83 |
|---|-------|

|  |          |
|--|----------|
| <i>betuleii</i> (Klug), <i>Scolioneura</i> ..... | 78,80,82 |
|--|----------|

|                           |     |
|---------------------------|-----|
| <i>Campoletis</i> sp..... | 262 |
|---------------------------|-----|

|   |     |
|---|-----|
| <i>compunctor</i> (Linn.), <i>Apechthis</i> ..... | 301 |
|---|-----|

|  |    |
|--|----|
| <i>connatus</i> (Schränk), <i>Cimbex</i> ..... | 75 |
|--|----|

|   |       |
|---|-------|
| <i>dohrnii</i> (Tischbein), <i>Fenusa</i> ..... | 78,80 |
|---|-------|

|   |     |
|---|-----|
| <i>lapidator</i> (Fabr.), <i>Trogus</i> ..... | 300 |
|---|-----|

|   |       |
|---|-------|
| <i>niger</i> (Linn.), <i>Lasius</i> ..... | 91,93 |
|---|-------|

|   |    |
|---|----|
| <i>platythorax</i> Siefert, <i>Lasius</i> ..... | 93 |
|---|----|

|   |       |
|---|-------|
| <i>proxima</i> (Serville), <i>Euura</i> ..... | 78,80 |
|---|-------|

#### ORTHOPTERA

|  |          |
|--|----------|
| <i>gregaria</i> (Forssk.), <i>Schistocerca</i> ..... | 77,78,83 |
|--|----------|

#### PLECOPTERA

|   |    |
|---|----|
| <i>araneoides</i> Klápálek, <i>Taeniopteryx</i> ..... | 56 |
|---|----|

|  |    |
|--|----|
| <i>atra</i> (Morton) <i>Capnia</i> ..... | 55 |
|--|----|

|  |    |
|--|----|
| <i>bipunctata</i> Pictet, <i>Perla</i> ..... | 55 |
|--|----|

|   |    |
|---|----|
| <i>cephalotes</i> (Curtis), <i>Dinocras</i> ..... | 55 |
|---|----|

|  |                |
|--|----------------|
| <i>grammatica</i> (Poda) <i>Isoperla</i> ..... | 56, 57 (photo) |
|--|----------------|

|   |                   |
|---|-------------------|
| <i>putata</i> (Newmn), <i>Brachyptera</i> ..... | 55,56,57 (photos) |
|---|-------------------|

|   |       |
|---|-------|
| <i>torrentium</i> (Pictet), <i>Siphonoperla</i> ..... | 55,56 |
|---|-------|

#### TRICHOPTERA

|  |    |
|--|----|
| <i>hirsutus</i> (Pictet), <i>Limnephilus</i> ..... | 49 |
|--|----|

|  |             |
|--|-------------|
| <i>pati</i> O'Connor, <i>Limnephilus</i> ..... | 49 (photos) |
|--|-------------|

